

#11898

003
1.30A.

RD

RD

RD

#11898

APPROVED
LORAIN CO.
MAP DEPT.

DATE 8-3-78

PAGE 4-00-019-D

BY T. McMain

VOID
AFTER

T.M.
A. 9. 79

-021
2.70A.

114

-027
1.36A.

0.86A

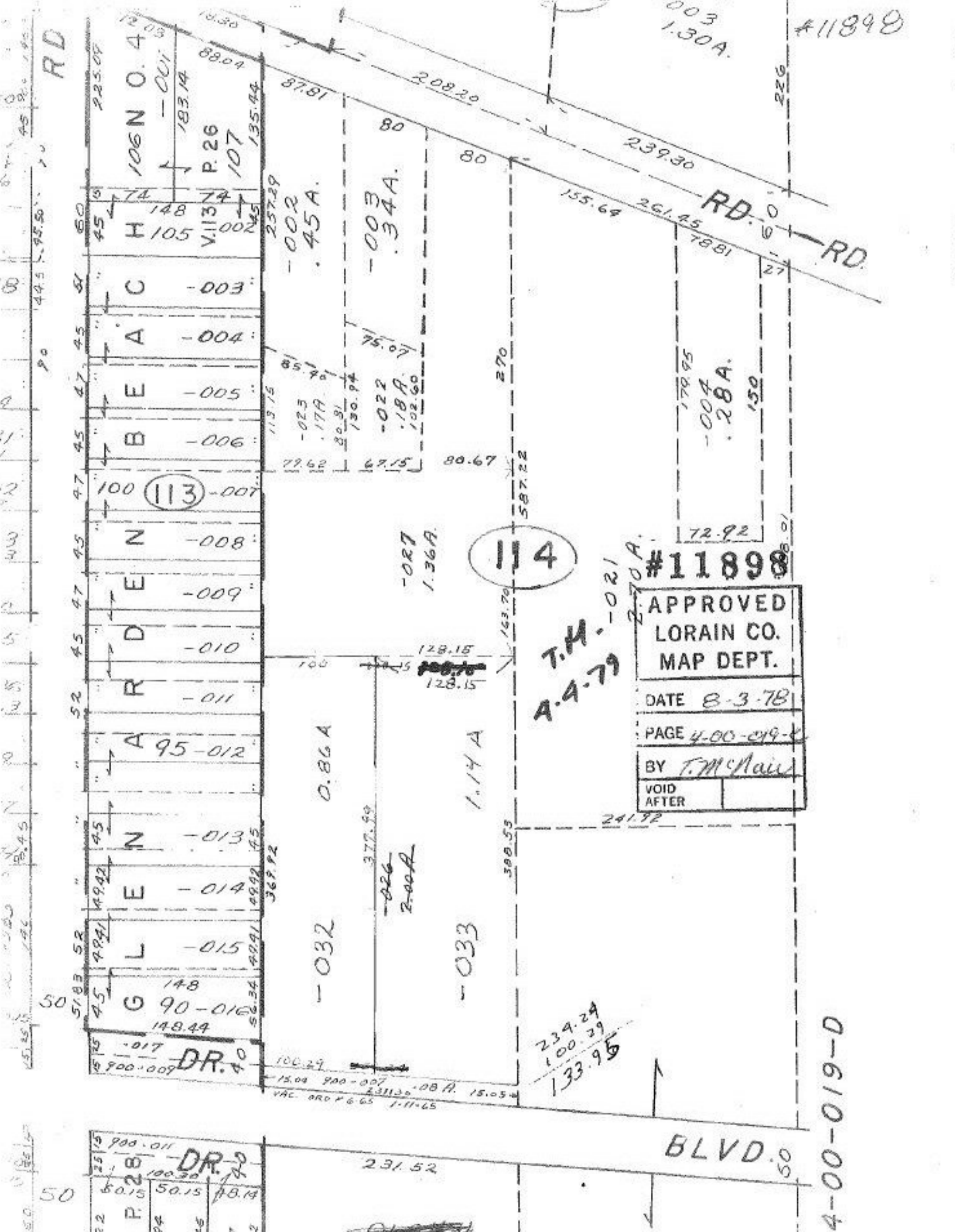
1.14A

-032

-033

BLVD

4-00-019-D



106 N O. 4
183.14
P. 26
107
135.44

H 105
V. 113
100

C -003

A -004

E -005

B -006

100 (113) -007

N -008

E -009

R D -010

-011

A 95-012

N -013

E -014

L -015

G 90-016
148.44

-017

DR. 900-007

DR. 900-011

P. 28

50.15

50.15

18.14

22

22

22

22

22