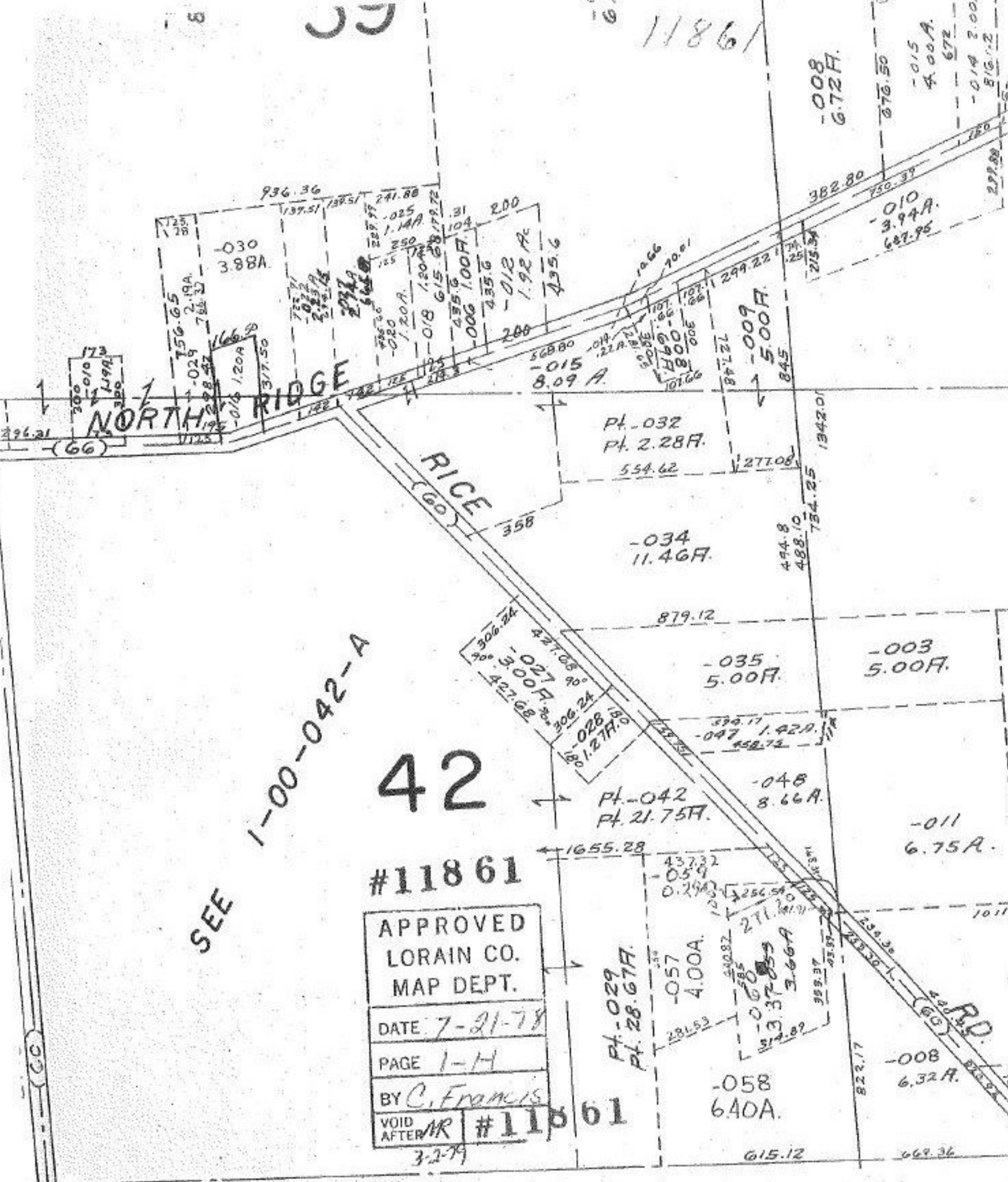


11861



SEE 1-00-042-A

42

#11861

APPROVED
LORAIN CO.
MAP DEPT.

DATE 7-21-78

PAGE 1-H

BY C. FRANCIS

VOID AFTER *MR* #11861

3-2-79

PT. -029
PT. 28.67A.

-058
6.40A.

-057
4.00A.

-060
3.37-859
3.66A

PT. -042
PT. 21.75A.

-048
8.66A.

-035
5.00A.

-003
5.00A.

-034
11.46A.

PT. -032
PT. 2.28A.

-009
5.00A.

-030
3.88A.

-008
6.72A.

-010
3.94A.
687.95

-008
6.32A.

-015
4.00A.
672

-014
3.00A.
516.12