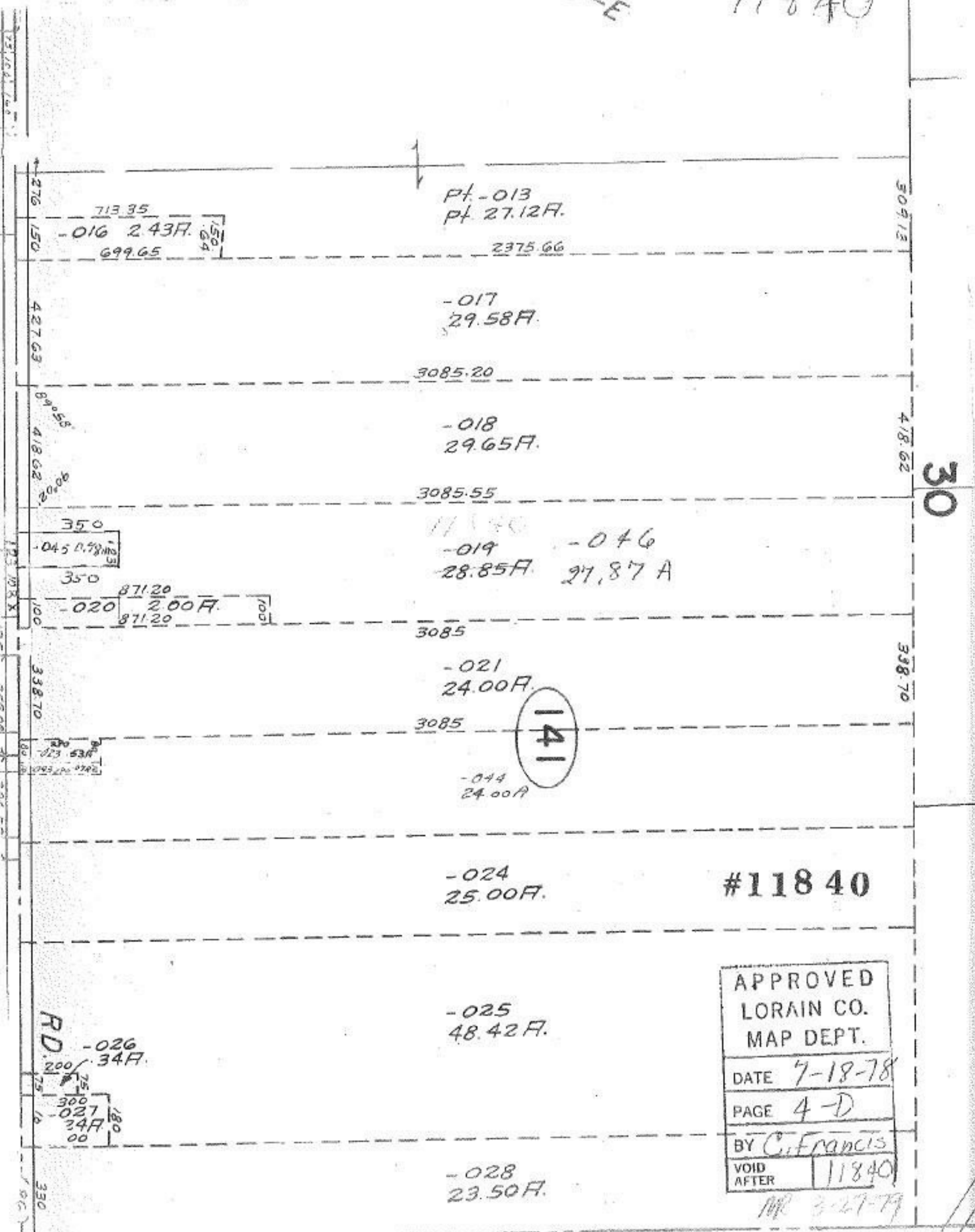


U-E

11840



Pt. -013  
Pt. 27.12F.

713.35  
-016 2.43F.  
699.65

2375.66

-017  
29.58F.

3085.20

-018  
29.65F.

3085.55

-019 28.85F. -046 27.87A

3085

-021  
24.00F.

3085

141

-044  
24.00F.

-024  
25.00F.

#11840

-025  
48.42F.

-028  
23.50F.

APPROVED
LORAIN CO.
MAP DEPT.
DATE 7-18-78
PAGE 4-D
BY C. Francis
VOID AFTER 11840

MR 3-27-79

30

509.13

418.62

338.70

276.150

427.63

89°05'  
418.62  
90°06'

350  
-045 2.78F.  
350

871.20  
-020 2.00F.  
871.20

338.70

89°05'  
338.70  
89°06'

RD.  
200  
75  
300  
-027 24F.  
180  
00

330