

-005
81.50 A.

SEE SPLIT NO 11980
For correct placement
of -006-4-19-78

11067

-001
47.50 A.

-002
47.50 A.

-003 - 005
65.72 A. 53.72 A

48

MAR 9 1979

#11836
SEE 15-00-049A

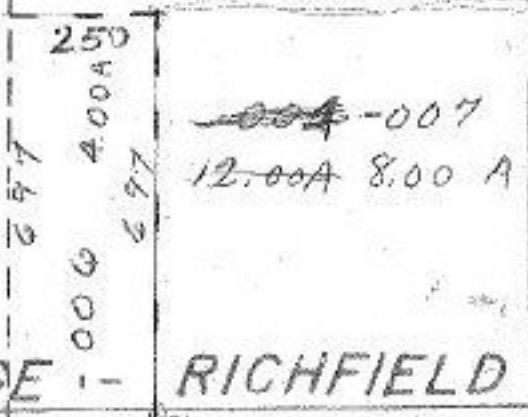
APPROVED
LORAIN CO.
MAP DEPT.

DATE 7-18-78

PAGE 15-D

BY C. Francis

VOID AFTER 11836



WAKEMAN - LAGRANGE - RICHFIELD

(60?)

250

LAGRANGE

SCALE: 1" = 400'

WHEELER