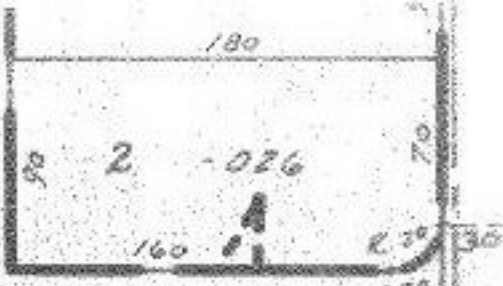


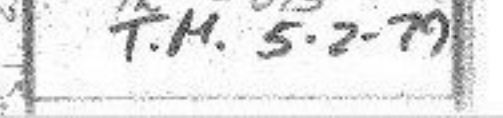
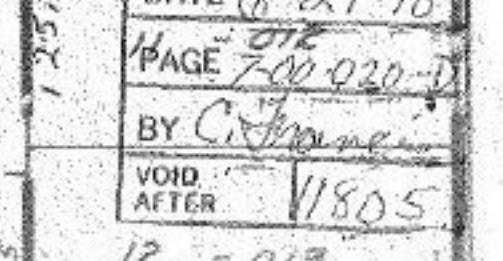
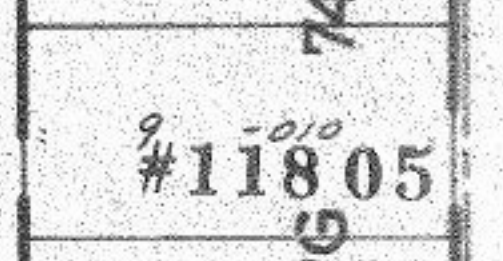
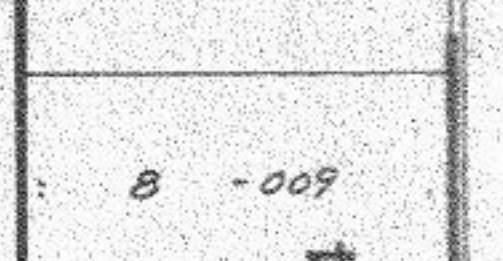
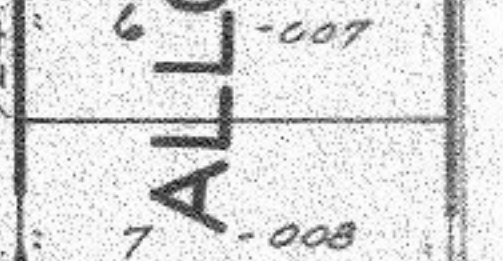
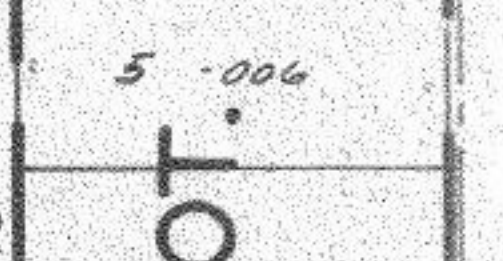
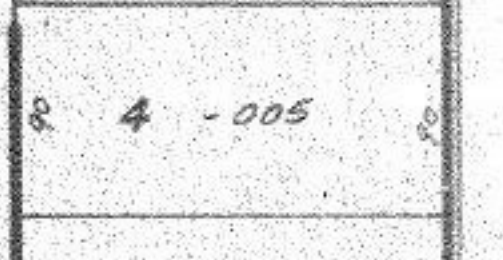
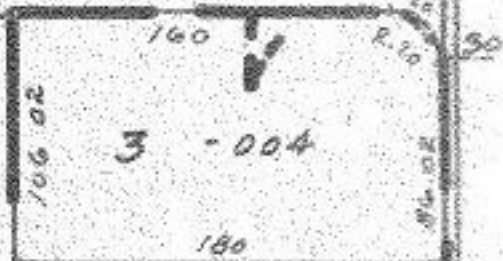
-022  
2.94A



240

235

482.03



26

123.56034
123.48035
36 123.87036
123.91037
123.85038
123.92050
40 124.00
124.15041
124.17042
124.40043
44 124.944
124.53045
124.76046
124.86047
48 124.98048

ST

25 125.12025
125.26026
125.45027
28 125.5028
125.75049
25.83
125.9531
32 125.86
126.75050
126.81
126.41095
36 126.58036
126.65037
126.76038
126.85051
40 126.99
127.17041
127.23042
127.34052
44 127.46
127.58045
127.67046
127.87047
48 127.99048

ST.

25 128.11025
128.25

200

~~-024~~ -029  
5.76A 5.62A  
11805

724.10

489.09

235

266.03

138 266.03

174.90

306.17

-026  
0.46A

306.12

APPROVED  
LORAIN CO.  
MAP DEPT.

DATE 6-29-78

PAGE 7-00-020-D

BY C. J. [Signature]

VOID AFTER 11805

12 - 013  
T.M. 5-2-79