

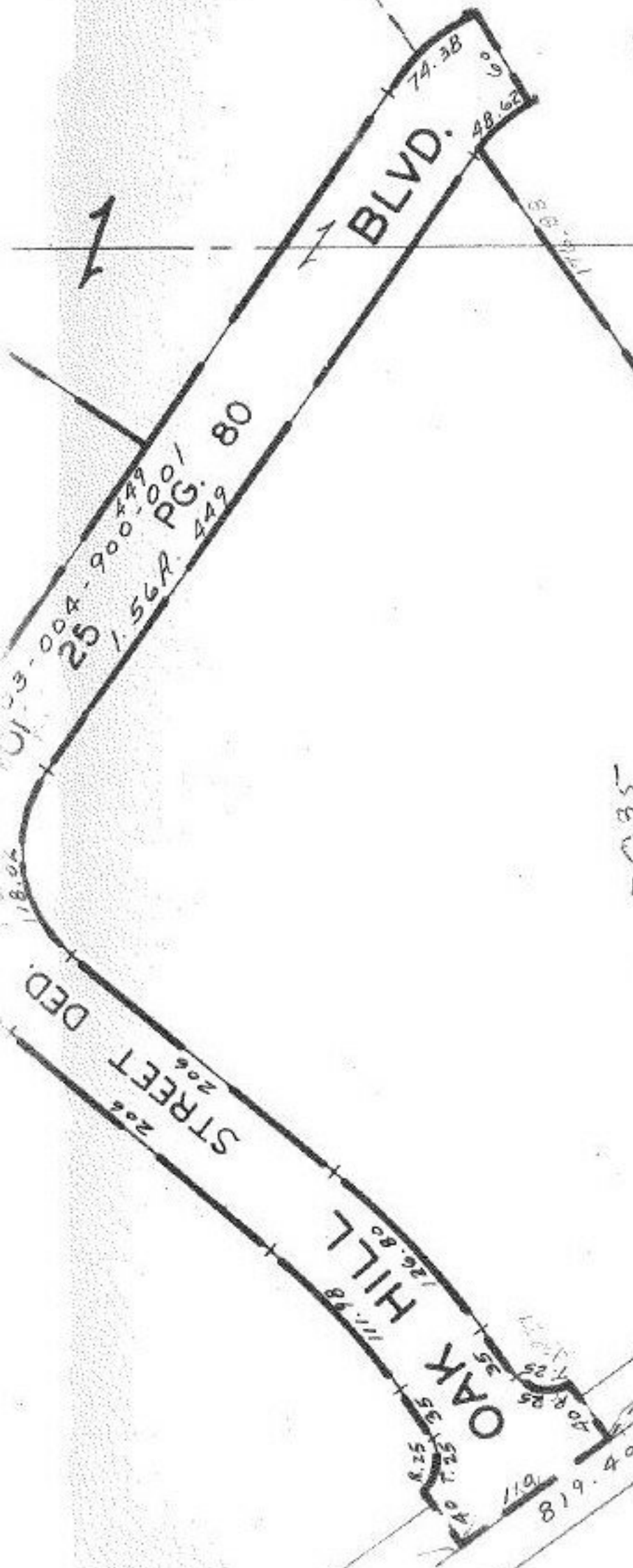
11788

#11788

APPROVED
LORAIN CO.
MAP DEPT.
DATE 6-26-78
PAGE 2-03-004B
BY J. McPain
VOID AFTER 11788

005A
006-A

MR 3-7-77



-035

7.06 A.

11.31

- Pt. - 025
- Pt. - 18.20A
- 036
- Pt. - 11.14
- Pt. - A

485