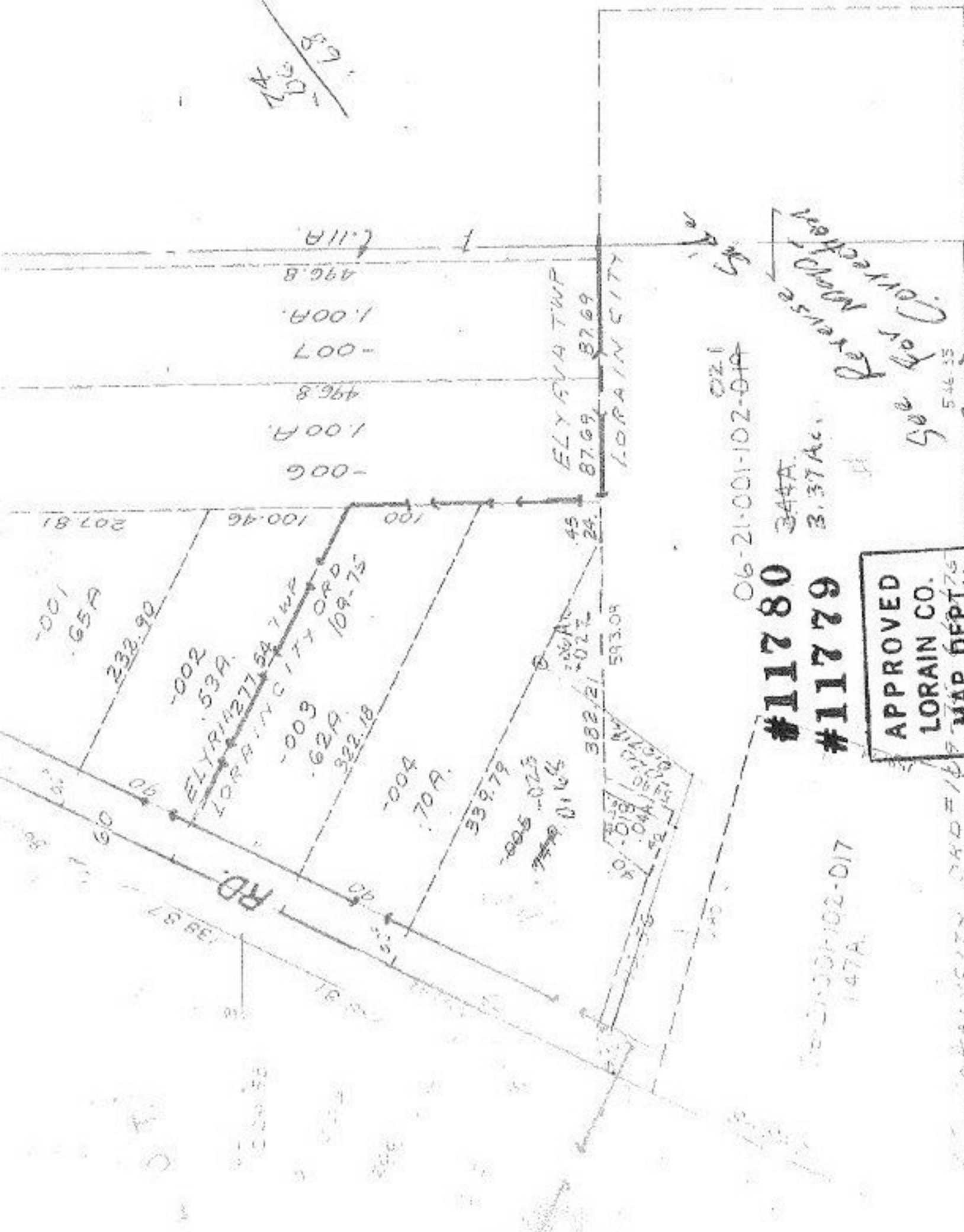


1A
106
879



#11780
#11779

06-21-001-102-01A
344A
3.37Ac.

APPROVED LORAIN CO. MAP DEPT.	
DATE 6-23-75	PAGE 10-1
BY <i>[Signature]</i>	
VOID	AFTER

Reverse
Corrected
Map

546.35
2028.9

4-26-79

06-21-001-102-017
147A

LORAIN COUNTY DAD=147
ELYRIA TWP