

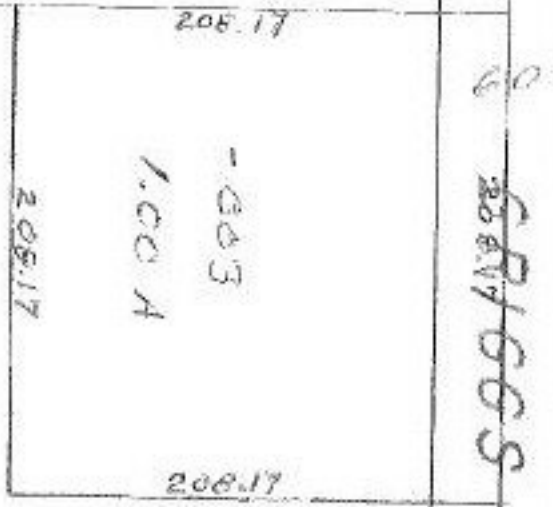
#11760

EE 20-05-023-B

#11760

APPROVED LORAIN CO. MAP DEPT.	
DATE 6-19-78	
PAGE 20-05-017A	
BY T. McNamee	
VOID AFTER	11760

10-20-78
SP



~~9.000 A~~ -001
8.000 A -004

#11760

-002
4.839

