

#11648

124.66
123.99

377.49
377.49
127.9

#11648

APPROVED LORAIN CO. MAP DEPT.	
DATE	5-12-78
PAGE	6-142
BY	T. M. Kain
VOID AFTER	

-064
36DA

MAY 7 1979

-053
0.80A

-055
0.76A

-059
0.60A

475.72
545.68

#11674

APPROVED LORAIN CO. MAP DEPT.	
DATE	5-18-78
PAGE	6-142
BY	J. Hollenbeck
VOID AFTER	

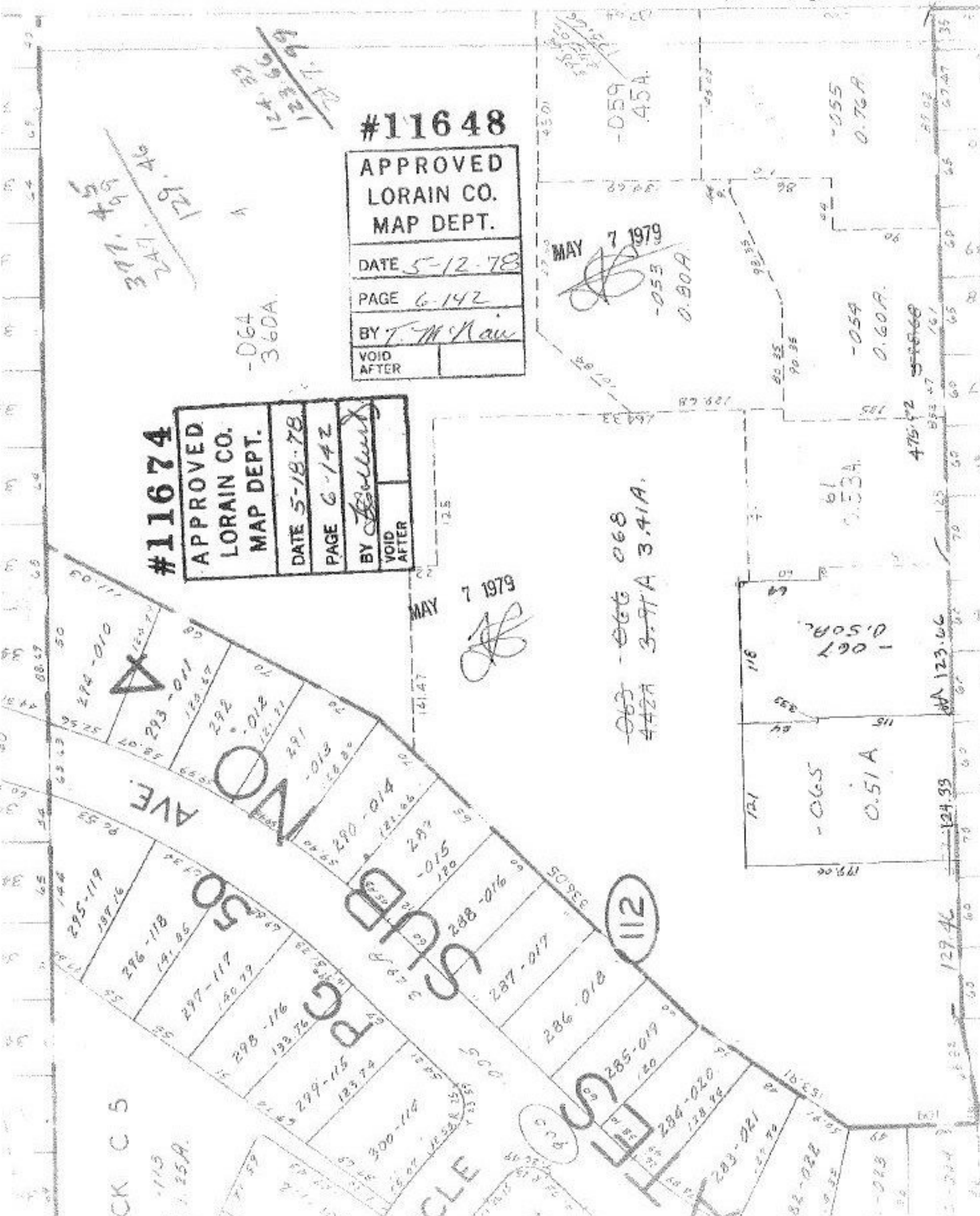
MAY 7 1979

~~063~~ 068
~~442A~~ 3.41A

61
0.53A

-065
0.51A

123.06



BOOK C 5

113
1.25A

112

124.39

127.46

129.06

123.06