

2.19 A.
 $\frac{991}{950.86}$

-021
 2.56 A
 1124.89

-018
 14.29 A
 -022
 11.73 A

#11642
 #11642

APPROVED LORAIN CO. MAP DEPT.	
DATE	5-11-78
PAGE	10-00-015-B
BY	T. McAn
VOID AFTER	11642

3-9-79
 T.M.

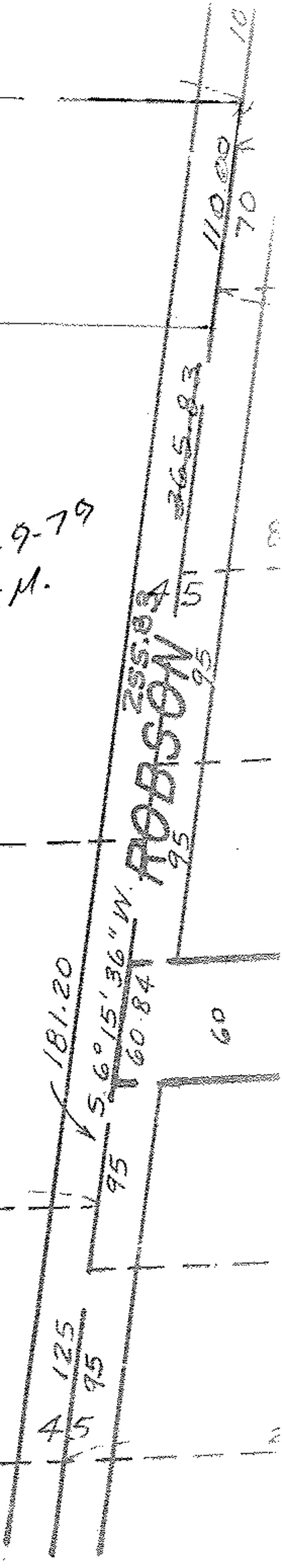
$\frac{1035.05}{1034.32}$

-019
 4.00 A.

656.78
 90° 12.43
 347.56

-020
 3.00 A.

N. 86° 43' E. 983.56



SEE 10-00-015-F