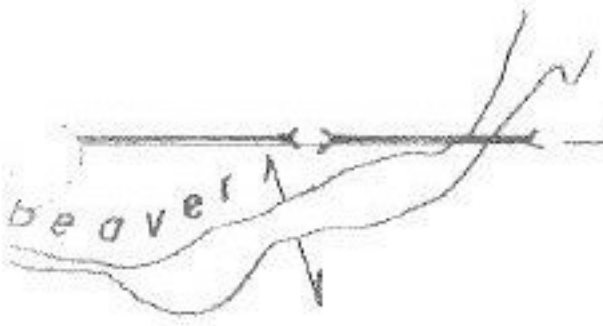


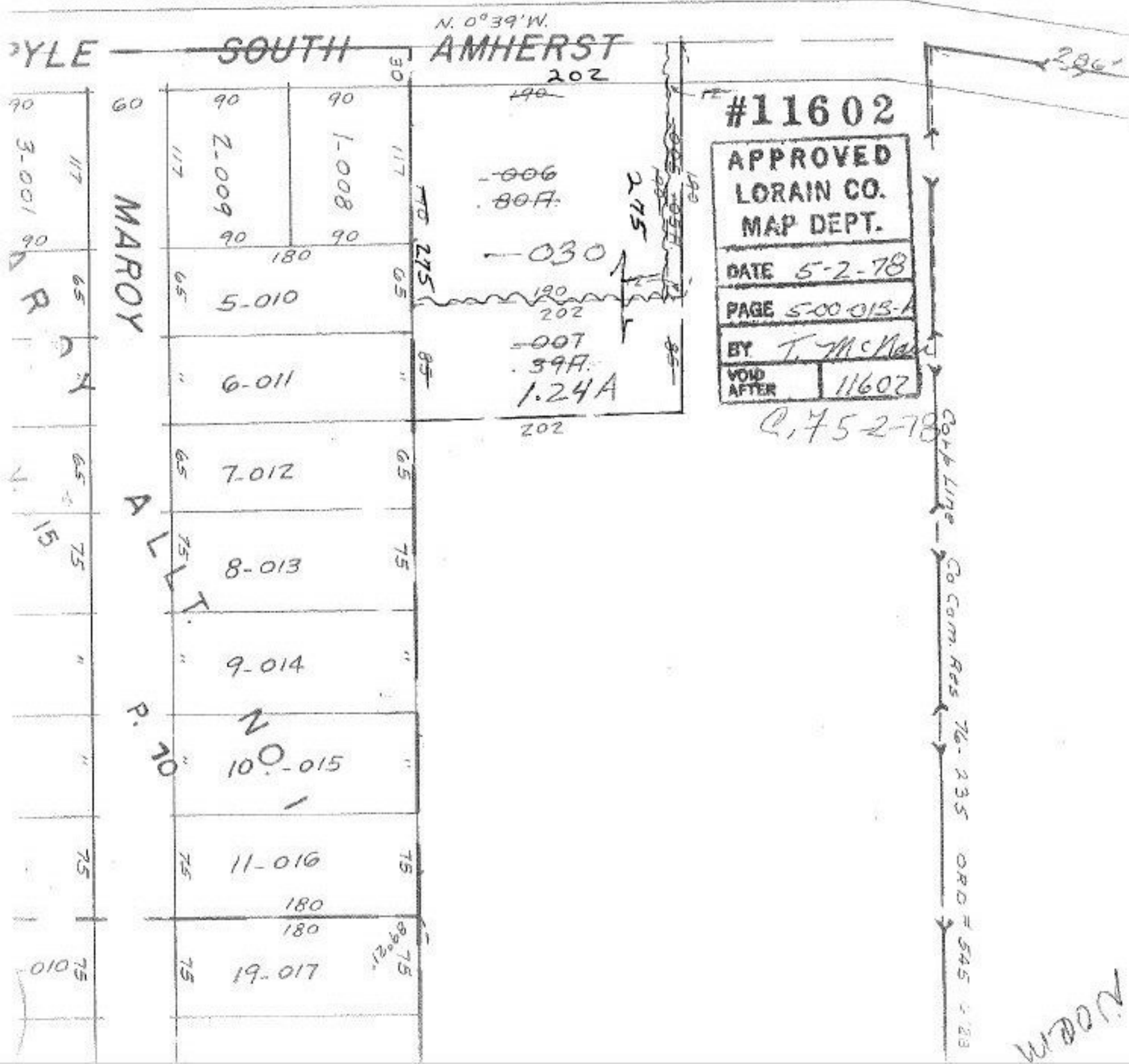
11602

North



Corp Line Co Com Res 76-235 ORD# 545 6/28/76  
1089

-004  
5.01A



#11602

APPROVED  
LORAIN CO.  
MAP DEPT.

DATE 5-2-78

PAGE 5-00-013-A

BY T. McKen

VOID AFTER 11602

Q, 75-2-78

Corp Line Co Com Res 76-235 ORD# 545 6/28/76

North