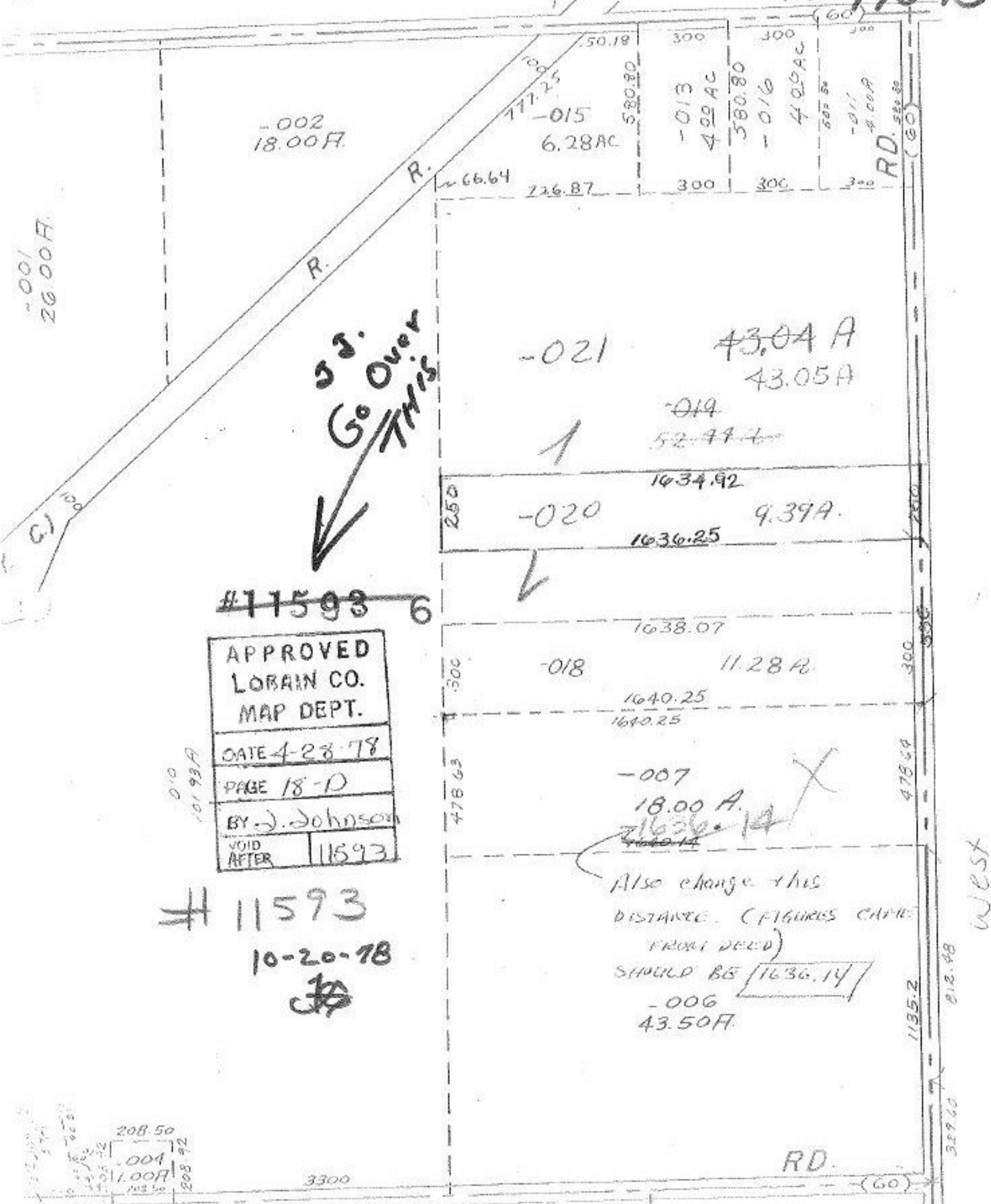


H 11593

Welby

RD. 11593



-001
26.00F.

-002
18.00F.

-021

43.04 A
43.05 A

-019
52.77 F.

-020

9.39 A.

-018

11.28 A.

-007
18.00 A.
216.36.14

Also change this
DISTANCE. (FIGURES CAME
FROM DEED)
SHOULD BE 1636.14
-006
43.50 F.

APPROVED
LOBAIN CO.
MAP DEPT.
DATE 4-23-78
PAGE 18-D
BY J. Johnson
VOID AFTER 11593

11593
10-20-78
CJP

West

208.50
208.92
208.50
1.00F
1.00F
208.50

RD.

(60)

002