

11574

11574

CLEVELAND



608.76

832.74

100

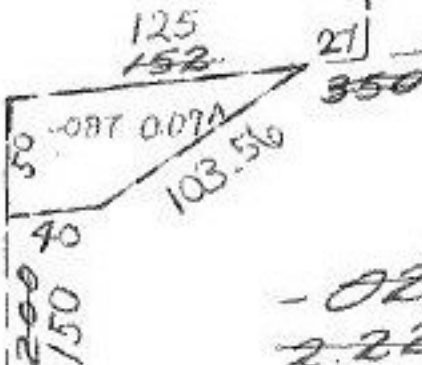
RD. 230
223.4

648.50

-028
2.12A.

564.66

-041
10.81 A.



-029 -088
2.22A 2.13A

#11574

5/18/78
JJ.

APPROVED	
LORAIN CO.	
MAP DEPT.	
DATE	4-20-78
PAGE	11-00-089
BY	C.F.
VOID AFTER	11574

150

-014
1.20A.

350

200

35
-U
3.