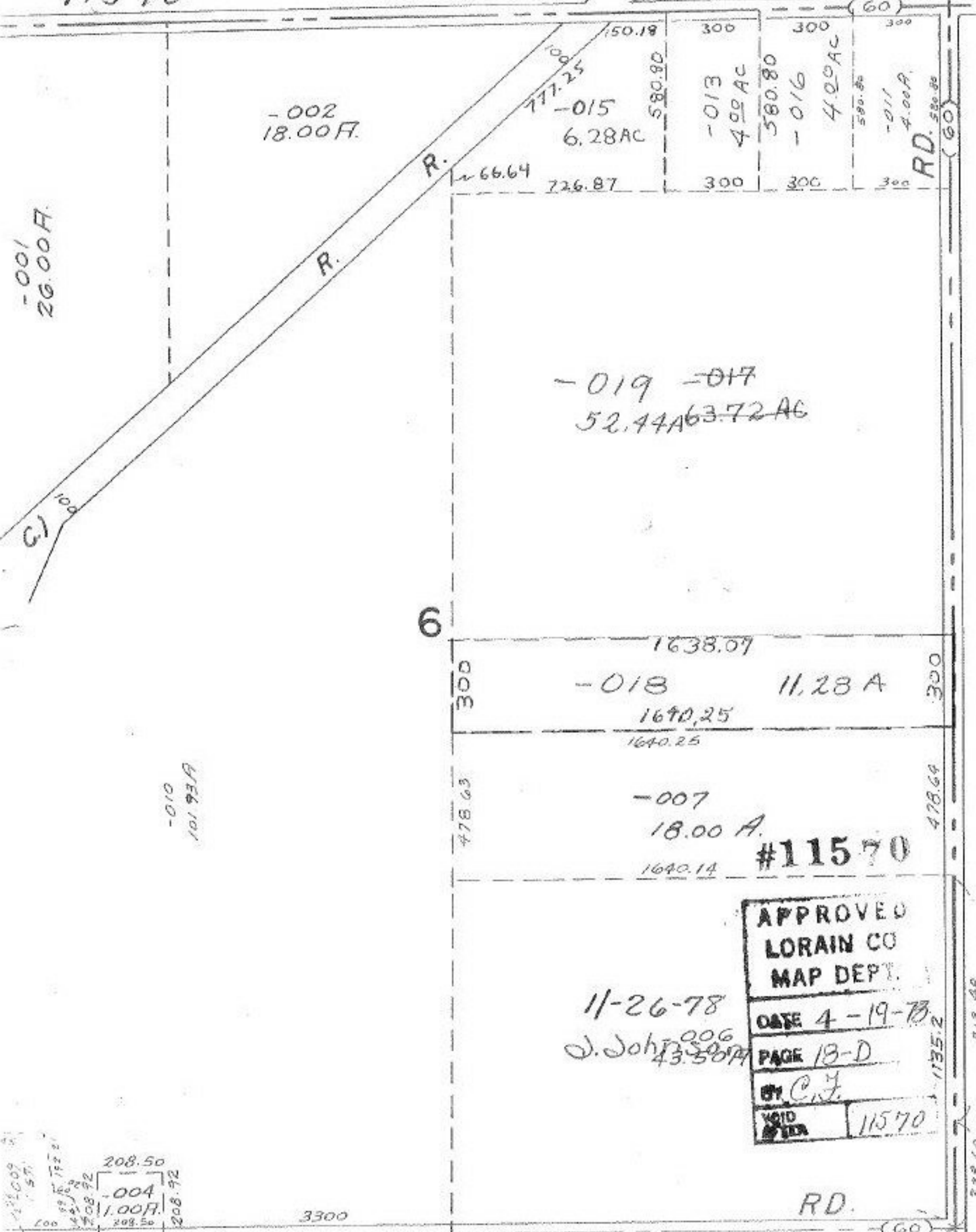


H  
11570

RD. 11570



-001  
26.00A

-002  
18.00A

-015  
6.28AC

-013  
4.00AC

-016  
4.00AC

-011  
4.00A

-019 -017  
52.44A 63.72AC

-018  
11.28A

-007  
18.00A

#11570

APPROVED  
LORAIN CO  
MAP DEPT.

DATE 4-19-78

PAGE 18-D

BY C.F.

VOID 11570

11-26-78  
J. Johnson 43.50A

-004  
1.00A

RD.

2559.08

-002