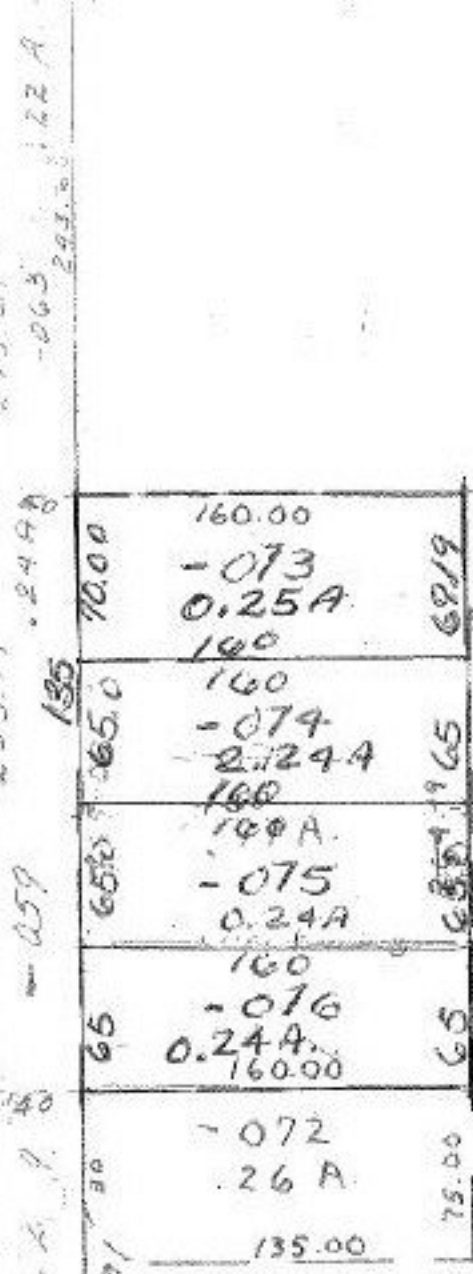


#11559

831.2

11559

-064
4.48 A.



#11559

APPROVED
LORAIN CO.
MAP DEPT.

DATE 4-13-78

PAGE 6-71

BY J. Johnson

VOID AFTER 11559

630.69

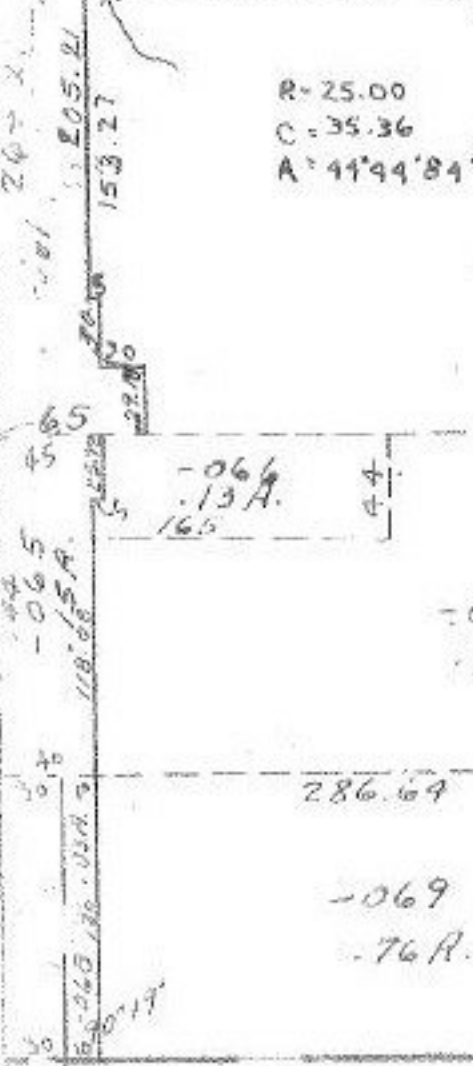
J. Johnson
4-23-78

832.74

R-25.00
C-35.36
A-44'44"84

-070
8.31A.

26



172.62

764.46

101

-007
1.27 A.

50 HOWARD

ST.

247.09
527.76
264