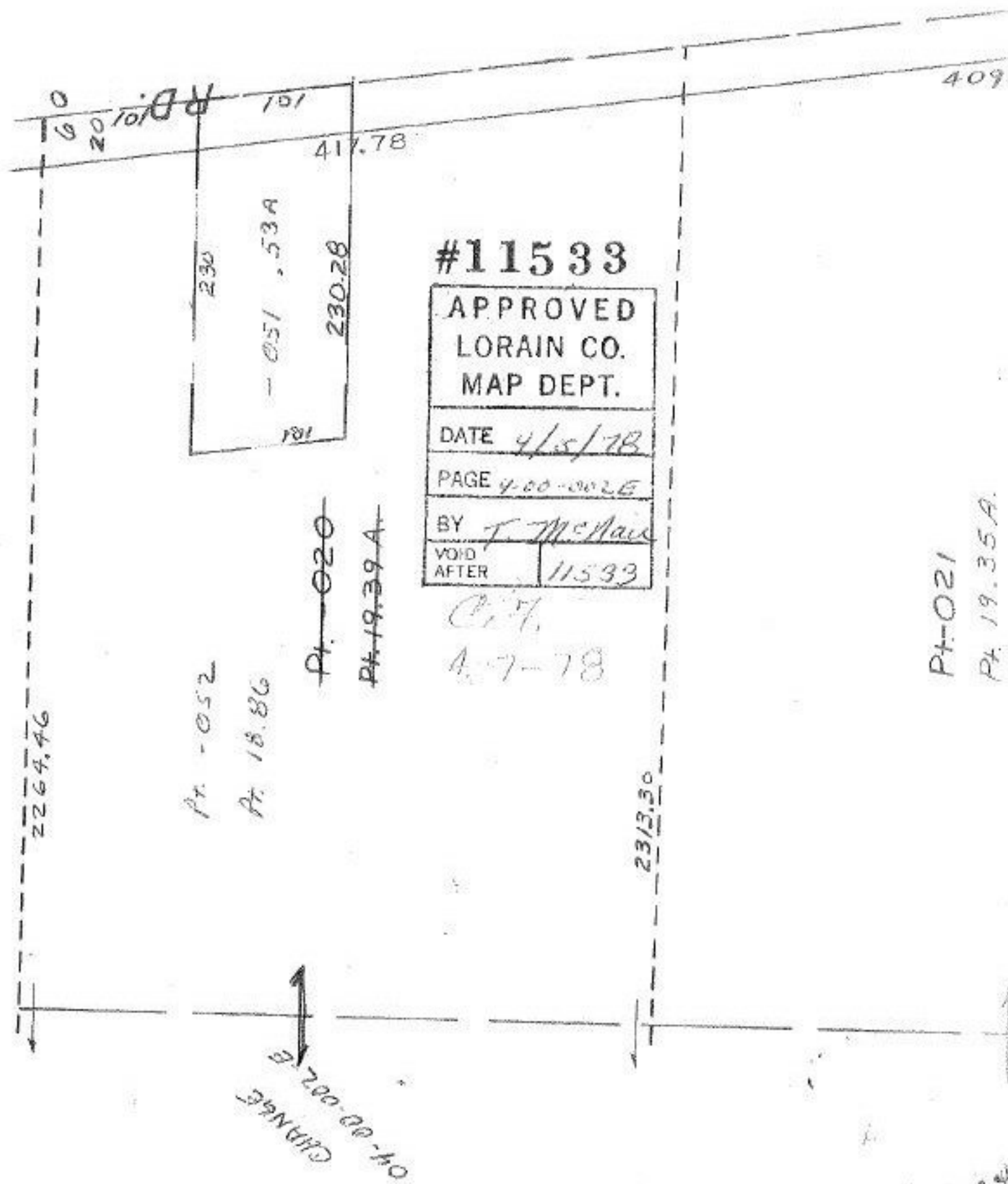


11533

SEE 4-00-002-B



#11533

APPROVED LORAIN CO. MAP DEPT.	
DATE	4/5/78
PAGE	4-00-002E
BY	J. McNamee
VOID AFTER	11533

Ch.
4-7-78

Pt-021
Pt. 19.35A.

25 3/4
19.5/8
18.

666