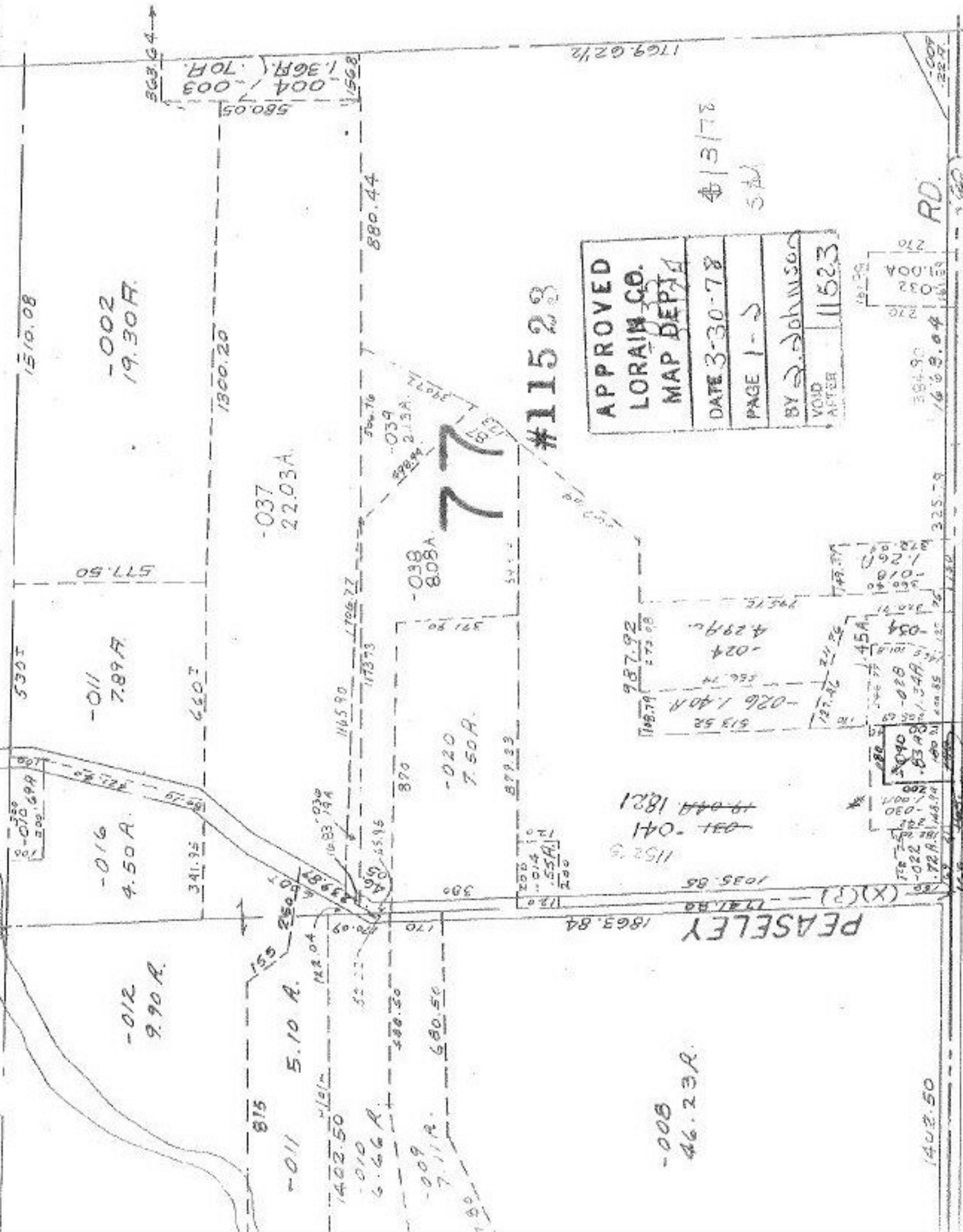


11523

TURNPIKE

OHIO



#11523

APPROVED
 LORAIN CO.
 MAP DEPT

DATE 3-30-78
 PAGE 1-2
 BY S. Johnson
 VOID AFTER 11523

4/3/78
S.A.J.

RD.

PEASELEY

1863.84

-008
46.23 R.

-012
9.90 R.

-016
4.50 A.

-011
7.89 A.

-037
22.03 A.

-038
8.08 A.

77

-020
7.50 A.

-002
19.30 R.

1402.50

16994 180

354.90
 1663.04
 270
 0.04
 270
 161.53

1769.02 1/2

563.64

580.05

1300.20

1510.08

5301

571.50

6607

880.44

1706.77

1465.90

870

879.33

300

200

130

1035.85

1741.80

1863.84

170

52.22

488.30

680.50

1402.50

123.04

123.04

123.04

123.04

123.04

123.04

123.04

123.04

123.04

123.04

123.04

123.04

123.04

123.04

123.04

123.04

123.04

123.04

123.04

123.04

123.04

123.04

123.04

123.04

123.04

123.04

123.04

123.04

123.04

123.04

123.04

123.04

123.04

123.04

123.04

123.04

123.04

123.04

123.04

123.04

123.04

123.04

123.04

123.04

123.04

123.04

123.04

123.04

123.04

123.04

123.04

123.04

123.04

123.04