

11509

R. R.

#11509

APPROVED
LORAIN CO.
MAP DEPT.
DATE 3/27/78
PAGE 5-00-097B
BY <i>[Signature]</i>
VOID AFTER

4-7-78

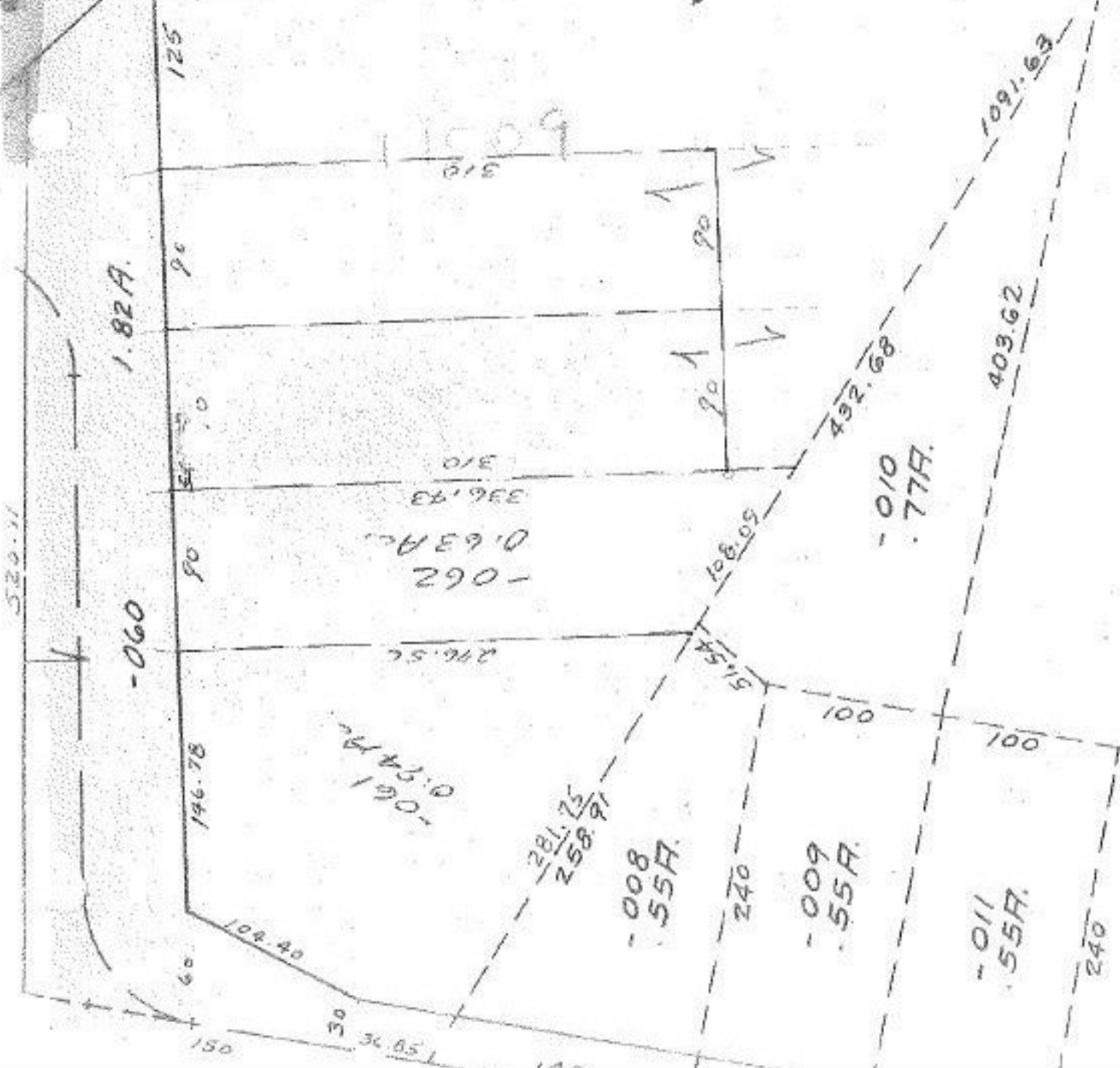
8.33
 1.57
 6.76

94
 63
 13.65A Total 1157
 PK. 80A Dup #10
 1.93A Dup #9
 1.72A Dup #8
 3.82A Dup #7
 2.32A Dup #6
 91A Dup #5

666.44

0.59
8.33

1000 ft
1/16 in



0.12
8.6

240