

102

11501

037
5.14A.
714

CT. →

16

-022
10.00F.

#11501

APPROVED
LORAIN CO.
MAP DEPT.

DATE 3-22-78

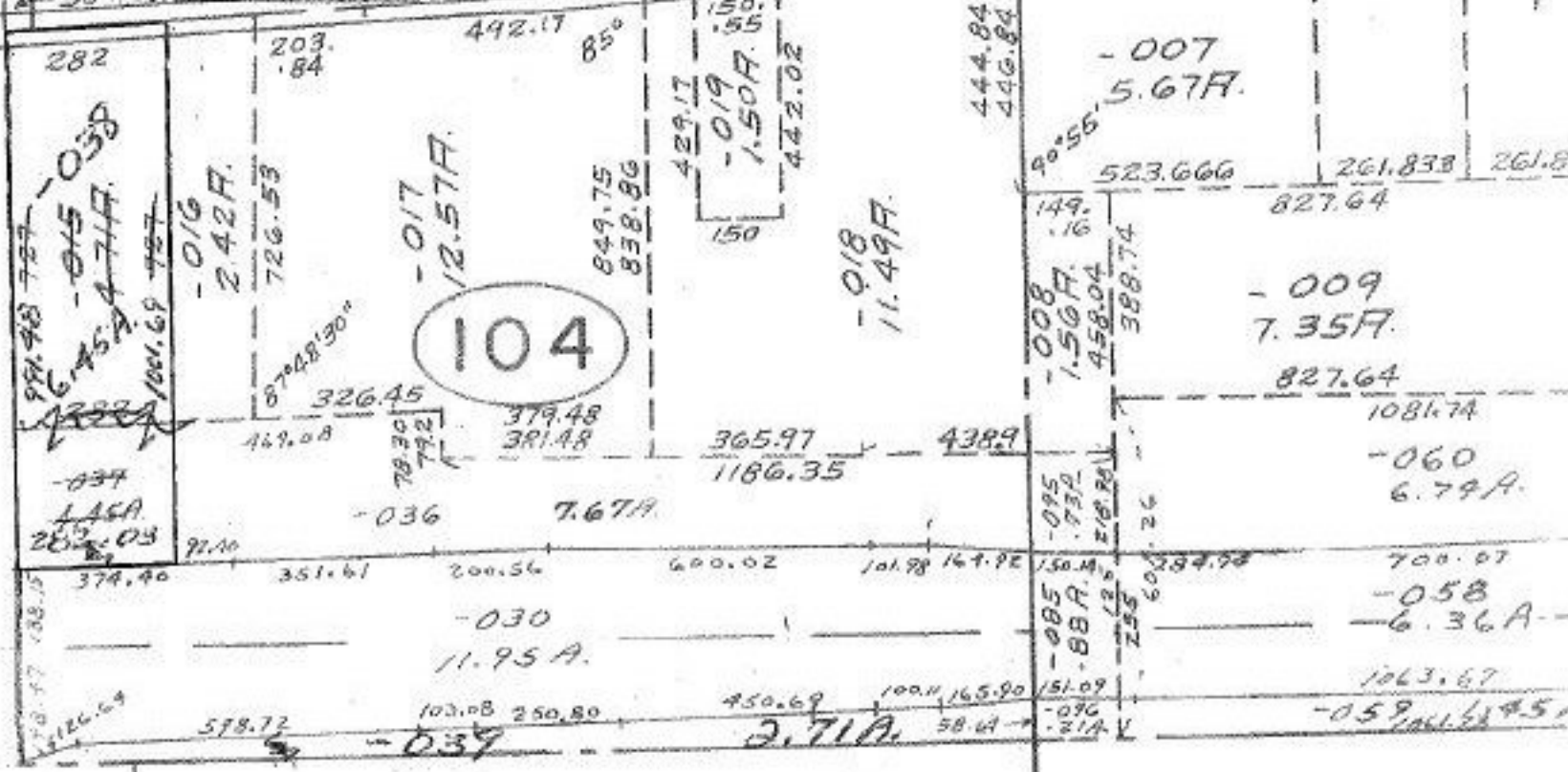
PAGE 4-G

BY *J. Collins*

-021
40.46F.
3-28-78
22.

VOID
AFTER

WDERMAKER



4.71
4.45

0.26
16
6.45

2.71 AC

015-D