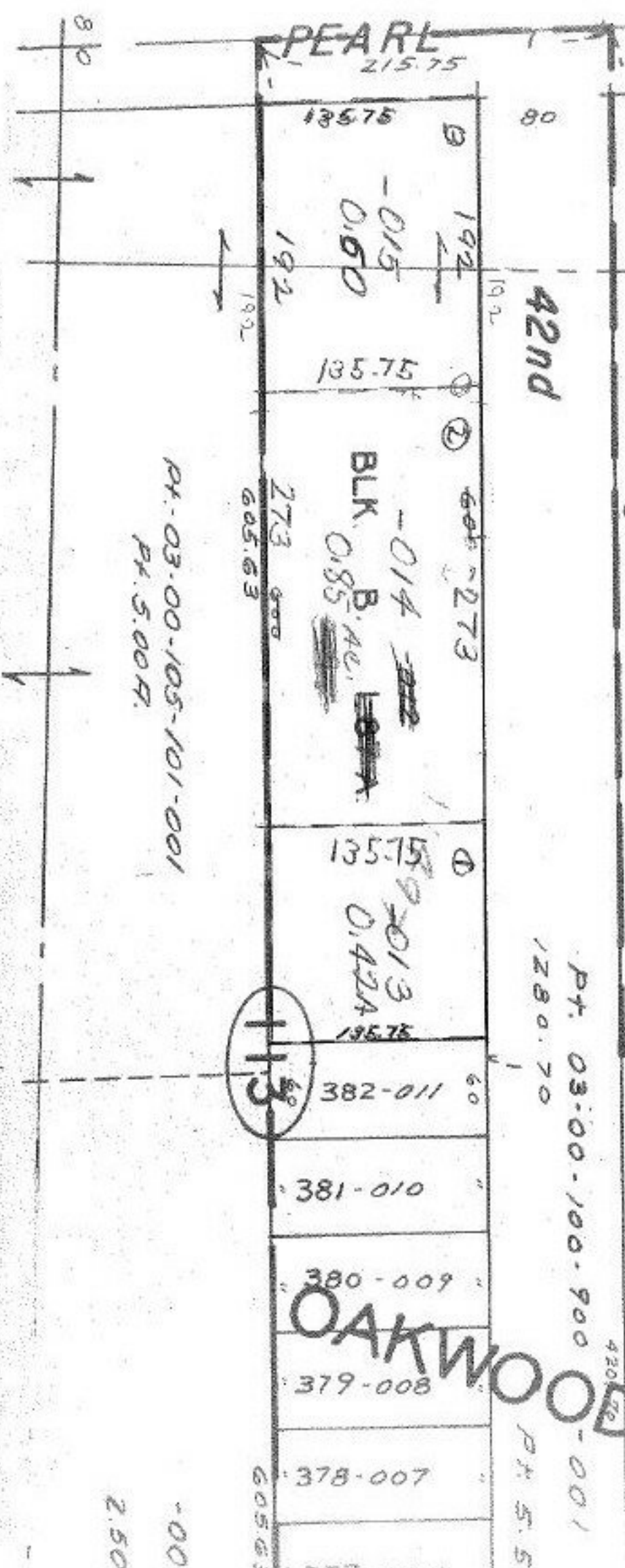


11497



0.60
0.85
0.42

1.87 A

Pt. 03-00-105-101-001
Pt. 5.00A

SEE 3-00-105-A

SPLIT
3-23-78

APPROVED	BY: <i>C. Thompson</i>
LORAIN CO.	DATE: 3-22-78
MAP DEPT.	PAGE: 3-10-100-A
VOID AFTER	11497

11497

439.93
519.93

K.M.A.
3-21-78

BLK. A.

-030

VOL. 24

OAKWOOD

ACRES

mm