

11451

-014
2.11A.

234

335.6

309.86

#11451

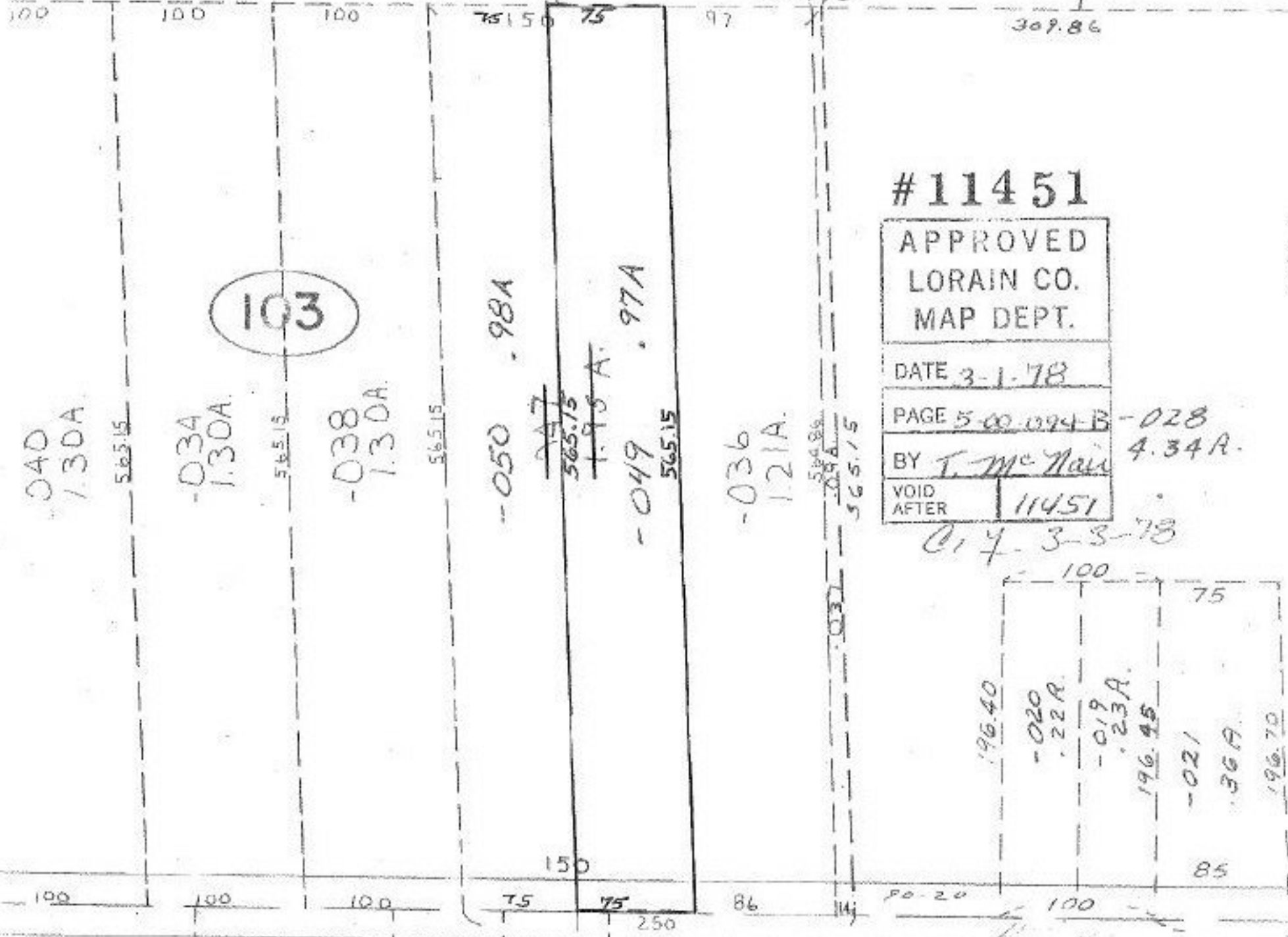
APPROVED
LORAIN CO.
MAP DEPT.

DATE 3-1-78

PAGE 5-00-094-B -028
4.34A.

BY T. McNeil
VOID AFTER 11451

014-3-3-78



103

040
1.30A

-034
1.30A

-038
1.30A

-050 .98A

~~047~~
565.15
~~1.95A~~

-049 .97A

-036
1.21A

196.40

-020
.22A

-019
.23A

196.45

-021
.36A

196.70

330

-023
1.00A

-024 .50A

-025 .50A

330

-026
5.00A

660

248

150

75 75 250

86

14

50-20

100

85

100

100

100

75.50

75

97

335.6