

#11448

W.D. To Lorain County

SEE 6-35

#11448

APPROVED
LORAIN CO.
MAP DEPT.

DATE 2-28-78

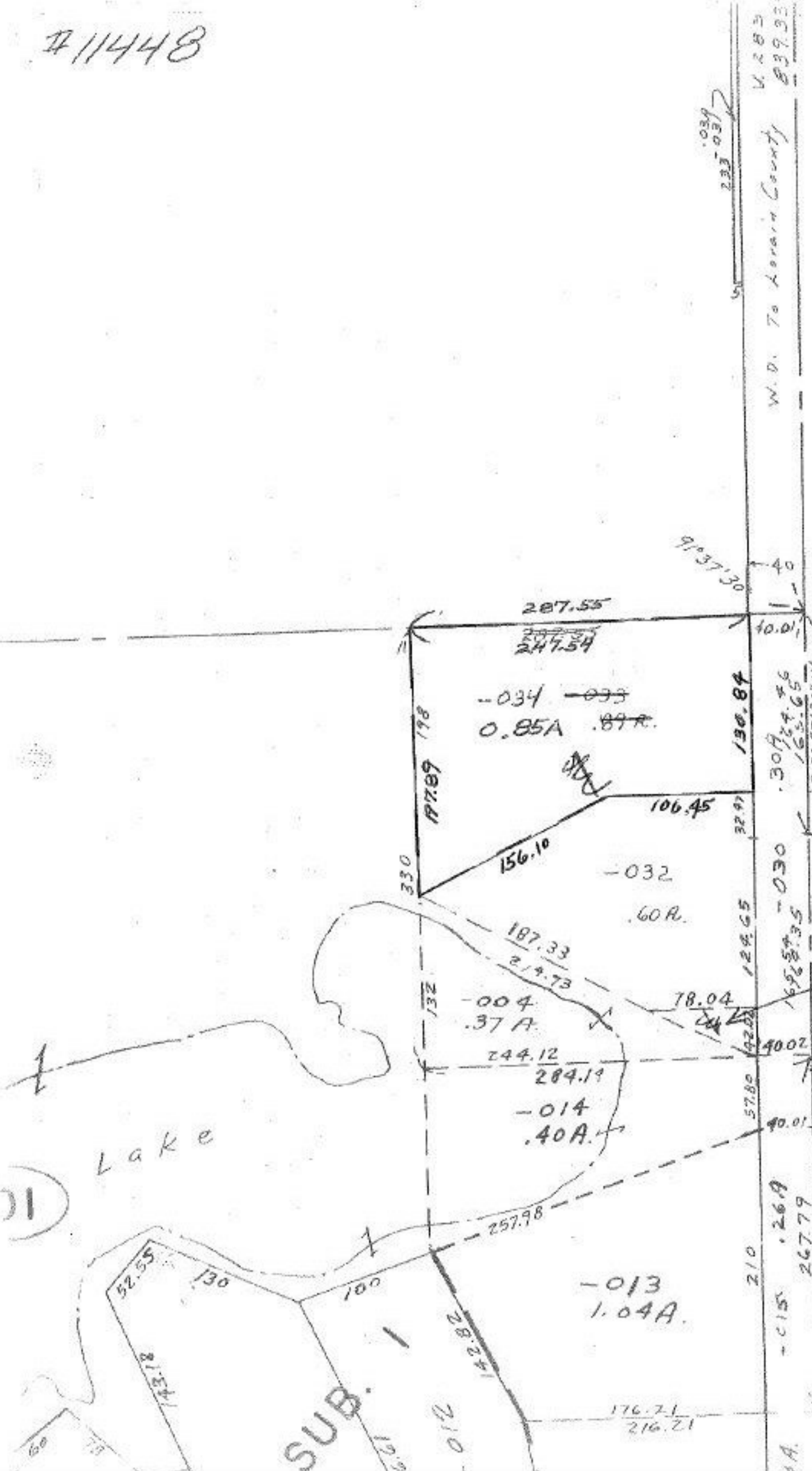
PAGE 6-34

BY T. McNamee

VOID AFTER 11448

3-1-78

S.P.



(1)

Lake

SUB. 1

-013
1.04A.

-014
.40A.

-004
.37A.

-032
.60A.

-034
0.85A .87A.

-035
0.04A

233.03

91°37'30"

130.84

32.97

129.65

192.00

57.80

40.01

210

267.79

269

150.03

233.03

91°37'30"

10.01

40

10.01

165.65

309.46

165.65

5.2°57'30" W

40.02

5.3°07' W 604.35

210

267.79

269

1A.