

#11440

NOEM

APPROVED	
LORAIN CO.	
MAP DEPT	
DATE	3/1/78
PAGE	11-00-928
BY	<i>J. M. Lewis</i>
VOID AFTER	11440

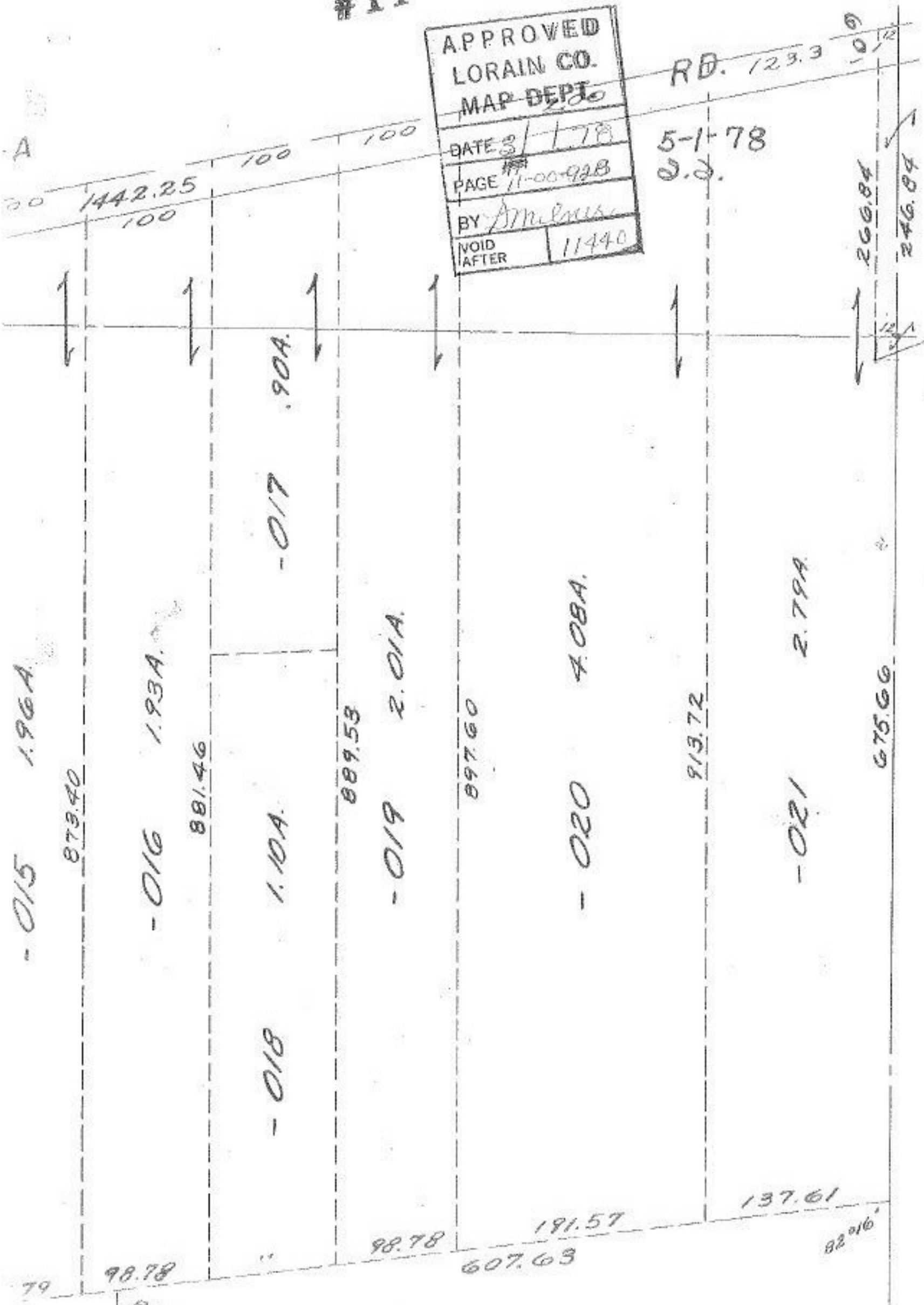
RD. 123.3

5-1-78
S.S.

A

20

79



1442.25
100

100

100

10 1/2

266.84

246.84

- 015 1.96A

873.40

- 016 1.93A

881.46

- 017 .90A

- 018 1.10A

889.53

- 019 2.01A

897.60

- 020 4.08A

913.72

- 021 2.79A

675.66

98.78

98.78

191.57

607.63

137.61

82°16'

85.05