

11389
0-49

2296.26

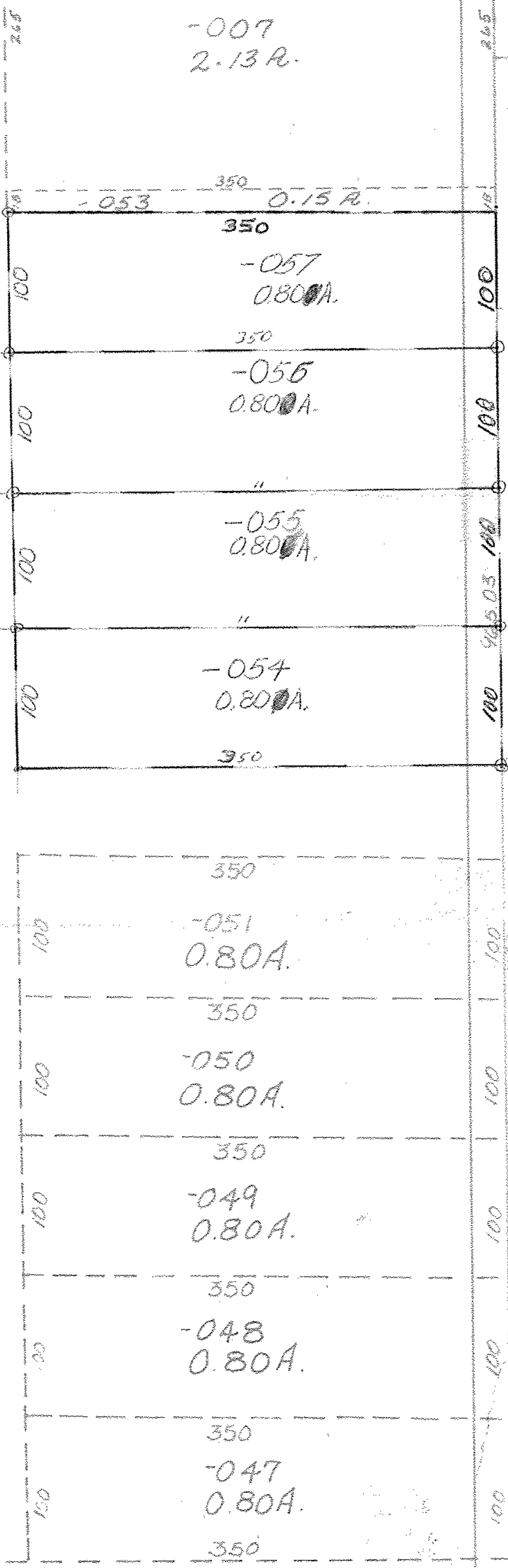
69.67
3.21
66.46

803
4
3.212

#11389

APPROVED
LORAIN CO.
MAP DEPT.
DATE 2-7-78
PAGE 11-00-008-B
BY *B. B. Rich*
VOID
AFTER 11389

~~Pt. -058~~
~~Pt. 66.47A.~~
~~Pt. -052~~
Pt. 69.67A.
Pt. 66.47A



-045
10.76 A.

1165.50