

-006  
71.68A.

10-78

#11374

APPROVED  
LORAIN CO.  
MAP DEPT.

DATE 1-23-78

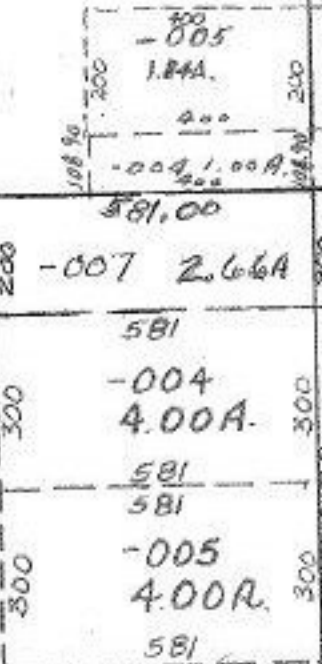
2/1/78  
J.A.

PAGE 7-D

BY T. McNeil

VOID AFTER 11374

PECK-WADSWORTH  
RD.



11374  
-006  
71.68A.  
-008  
114.62  
28

1755



RD.



100.5  
1.00A  
26.5