

11327

-010
145.11A

25

1548
764.15
1083.85

40.10
38.60
12.50

#11327

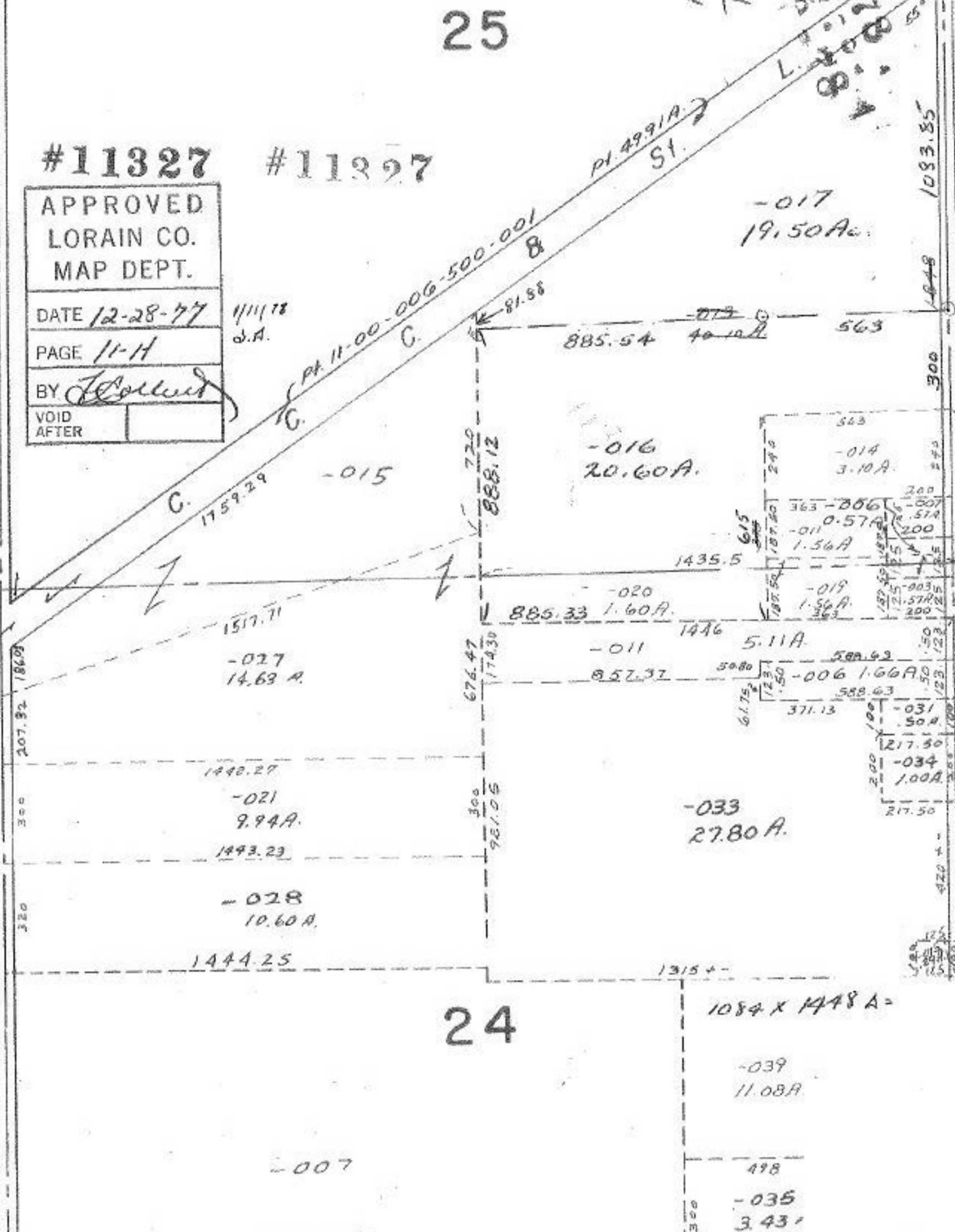
#11327

APPROVED LORAIN CO. MAP DEPT.
DATE 12-28-77
PAGE 11-H
BY <i>J. Collins</i>
VOID AFTER

11/11/78
d.A.

Pl. 4991A
St.

-017
19.50A.



24

1084 x 1448 A.

-039
11.08A.

-007

64.00A.

498

-035

3.43

498.2

-036

2.23

80.80

2 2

Handwritten scribbles