

11289

11289

133

104.75 FT

1787.28

MERRIAM

208' 8 1/2" .002  
208' 8 1/2" 1.00 FT.

89' 15"

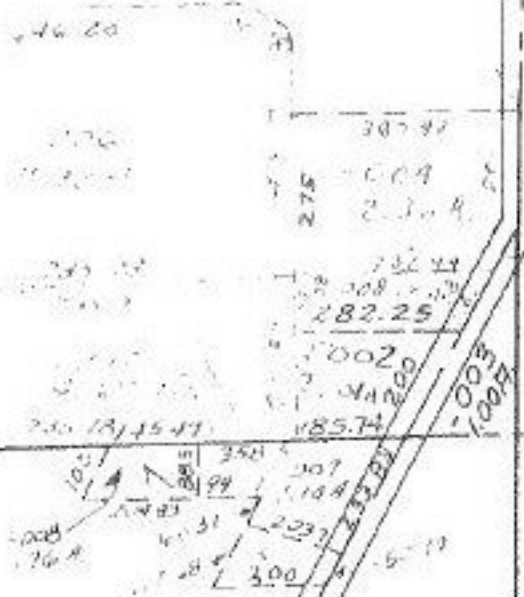
#11289

APPROVED LORAIN CO. MAP DEPT.
DATE 12-19-77
PAGE 14-F
BY J. Allgood
VOID AFTER 11289

-013  
62.91 A

148

-014  
13.17



-005  
27.11 A

-003  
10.00 FT.

#11289

153

-002  
70.50 FT.

300.00

89' 12"

89' 73"

16' 39" 45"

400.00