

11271

6.48A.

101

739.74

648.76

SEE 4-00-002-1

SEE 4-00-002-G  
875.16

~~025~~ -050  
~~8.57A~~ 8.10A

#11271

APPROVED	DATE 12-2-77
LORAIN CO.	BY M. Stewart
MAP DEPT.	VOID AFTER 11271

MS-17-TT  
D-17

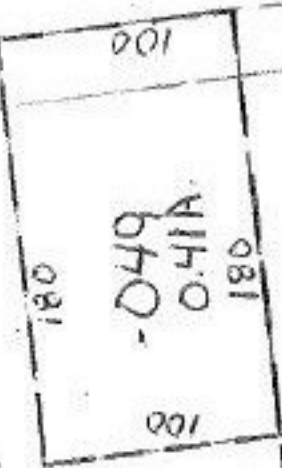
86°45'

447.01  
400

-027  
.92 A.

403.93

204°23'



93.32

202.26

54°32'

2433.41  
1994