

-002
70.81A.

31

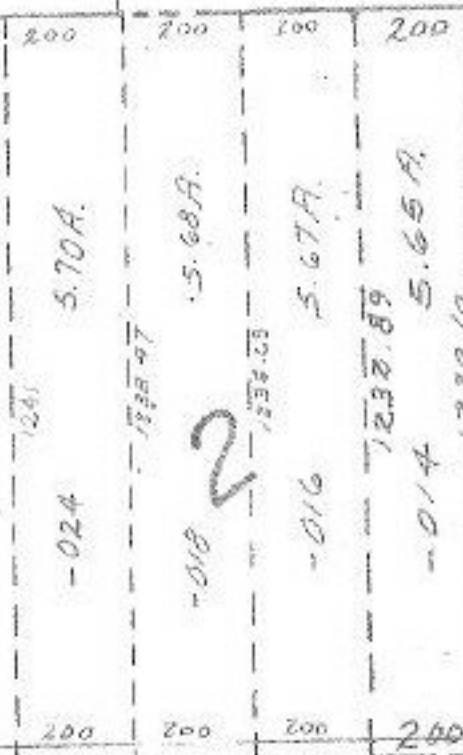
37.75A.

11255

per survey
C.E. Penfold

15.75
7.87
7.88

025
82.19A.
30



-027
7.88A.
7.92A
RD. 279.75
559.51
600?
1222.14
1222.30
1222.30
1222.30
1222.30

29 T

-009
39.59A.

-016
9.71A
1814.50
212.80

#11255

~~#11255~~

APPROVED
LORAIN CO. MAP DEPT.
DATE 12-2-77
PAGE 19 of 20
BY <i>[Signature]</i>
USED AFTER 11255

8

-002
41.53A.

-006
22.28A.

-007
7.14A.

-005
1.76A
918.71