

11248
110-11-8

17.58A.
2580.55

-006
17.50A
2580.35

-003
1815
1315 5.00A.

-007
19.84A.

-001
50.54A.

-002
26.00A.

#11248

#11248

APPROVED LORAIN CO. MAP DEPT.
DATE <u>11-25-77</u>
PAGE <u>15-C</u>
BY <u>M. Staudt</u>
VOID AFTER <u>11248</u>

12/10/77
-018
JA. 50.22A.

-024
24.48A

~~5004~~
26.00A.

-023
1.52A.
RD

26.00
1.52

24.48

-002
64.71A. Dup.
63.435A. D.

-008
60.95A.

625.85

644.97

720
620

639.57
(60)

04
52A.

428.62
3.91A.

201
46A.

128.66

1378.05

310

120 296.83

275

593.66
430

890.57

1275.7

1322.64
1976.79

300

920.40

120

1693.8

90°00'

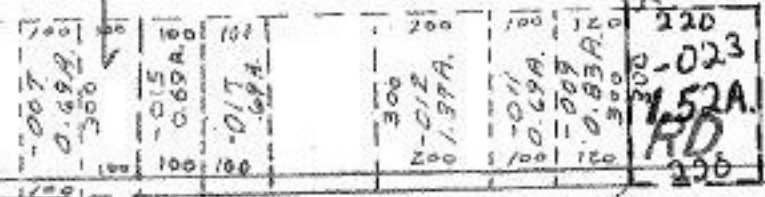
90°09'

27

961.65
956.65

1372.73

469.60
737.82



2.45

30°52'

90°00'