

301 0.79
00 A

6-2626 81
#11238

APPROVED
LORAIN CO.
MAP DEPT.
DATE 11-22-77
PAGE 15 C
BY *D. Miller*
VOID
ASTER 11238

DEC 18 1977

-001
50.54 A.

-002
26.00 A.

-008
60.95 A.

-018
50.22 A.

48.90
51.0

0.68 A

-004
26.00 A.

1378.05

-003
20.28 A.

-004
20.52 A.

005 3.91 A

-001
17.46 A.

1428.66

-002
64.71 A. Dup.
63.435 A. D.

1308.45

1322.64
1376.79

1275.7

1190.34

27

1372.73

619.18

625.85

644.97

900.00

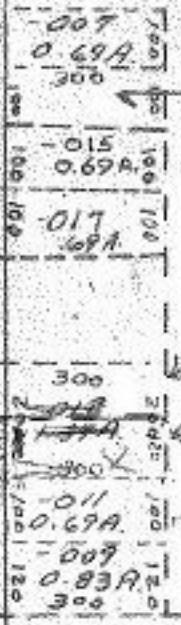
720

620

RD.

639.57

(60)



444.60
737.82