



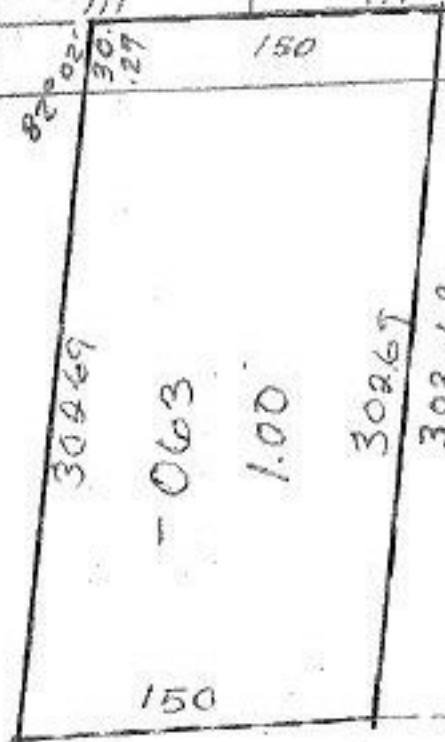
45.47
131.3

111
30.27

150

248.40

RD 162 0
#11234



-061
1.73A

APPROVED LORAIN CO. MAP DEPT.	
DATE	11-22-77
PAGE	7-10-0398
BY	<i>D. Milner</i>
VOID AFTER	11234

RD 66
112-10/77
J.A.

#11234

NOV 25 1977



SEE 7-00-034-A

903.99
905.4

-062
9.31A

-064
~~831A~~ 831A

85°56'
84°56'

268.4

84°56'
85°56'

100.85

290.03

21°32'25"