

#11224

APPROVED
LORAIN CO.
MAP DEPT.
DATE 11-21-77
PAGE 10-00-013A
BY <i>Philmer</i>
VOID AFTER 11224

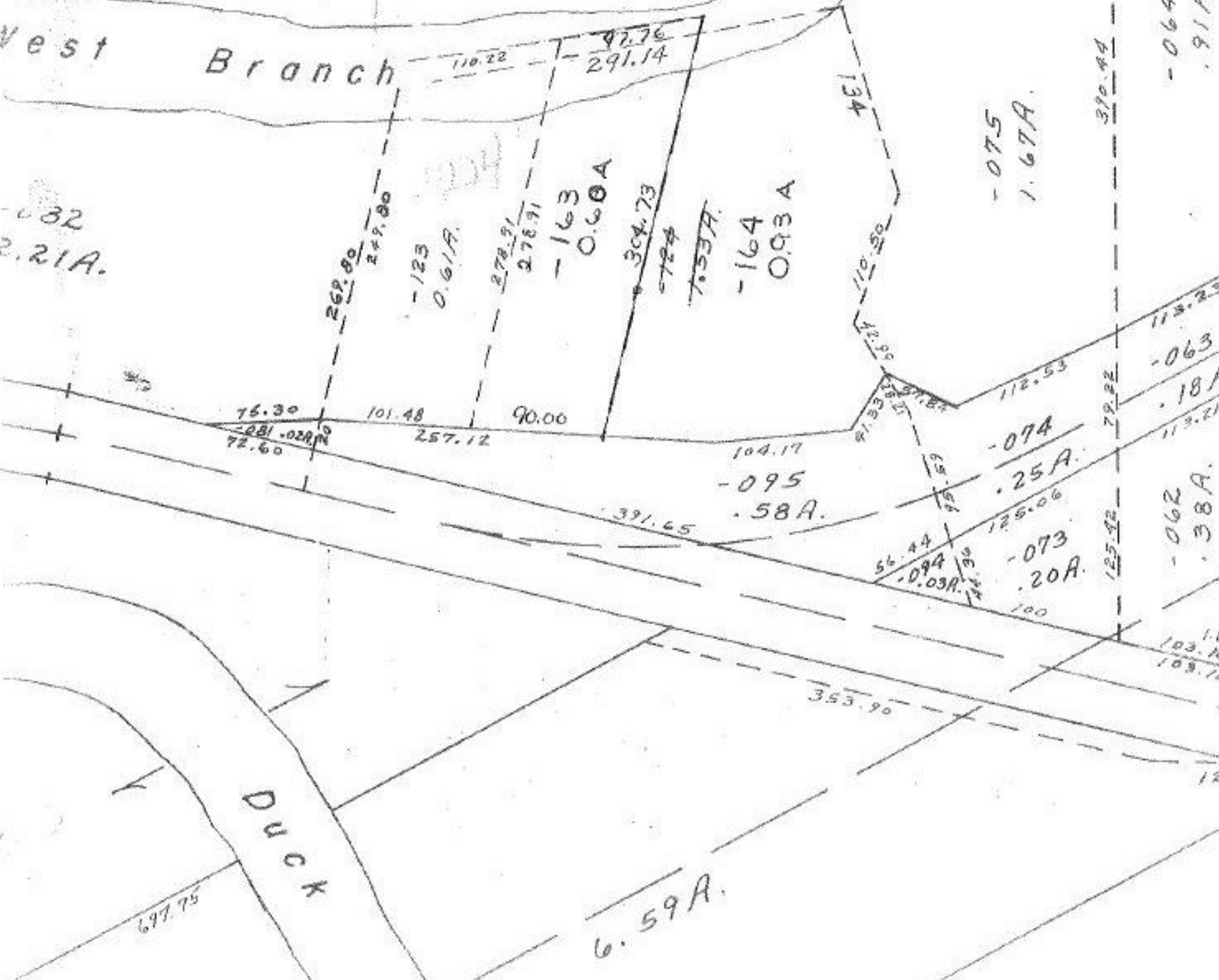
Water. Water
 Flood. Patch
 8-25-75

NOV 22 1977

Vest Branch

Block

2.21A.



Duck

6.59A.

697.75

353.90

-064
.91A.

-075
1.67A.

113.23
-063

.18A
113.21

-062
.38A.

103.10
103.12

12