

G

502.90

150

400
-003
1.38A.
400

275
-009
1.63A
-015
1.53A
225
RD.
587.10 (60)

82

#11211

APPROVED
LORAIN CO.
MAP DEPT.

DATE 11-15-77

PAGE 11E

BY P. Milner

VOID AFTER 11211

NOV 18 1977

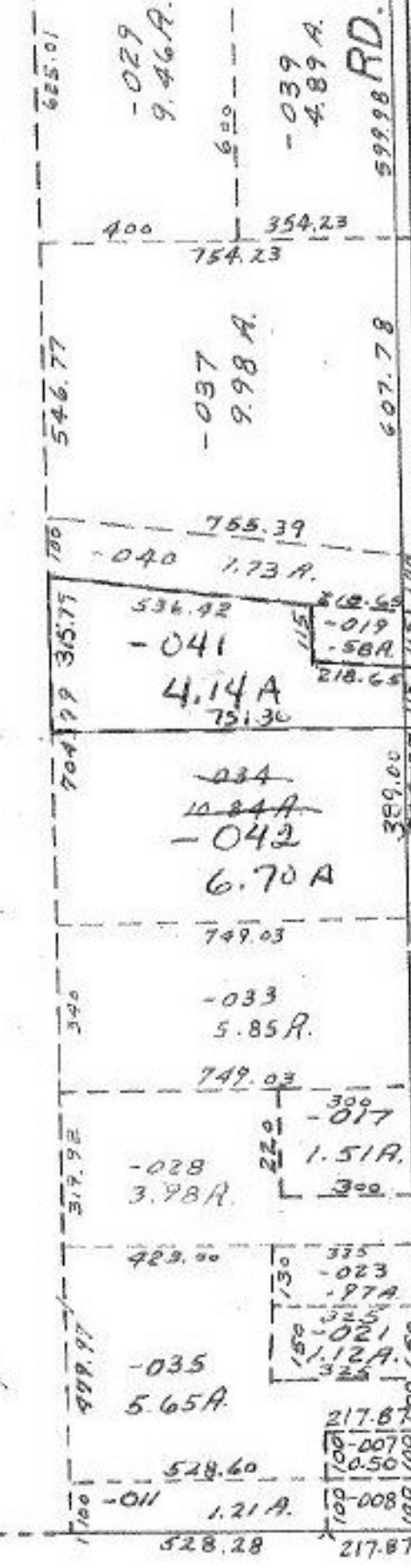
3584.89

-001
41.08A.

3597.19

-036
78.10A.

85



625.01
-029
9.46A.
600
-039
4.89A.
599.98 RD.
356.14
300
-60

400
754.23
354.23

546.77
-037
9.98A.
607.78

755.39
-040
1.73A.

704.99
315.77
536.92
-041
4.14A
751.30
218.65
-019
-58A.
218.65

749.03
-042
6.70A
389.00

749.03
-033
5.85A.

317.92
-028
3.98A.
220
-017
1.51A.
300

429.00
-035
5.65A.
130
375
-023
1.97A
325
-021
1.12A.
325

528.60
-011
1.21A.
528.28
217.87
-007
10.50
-008
100

298.96