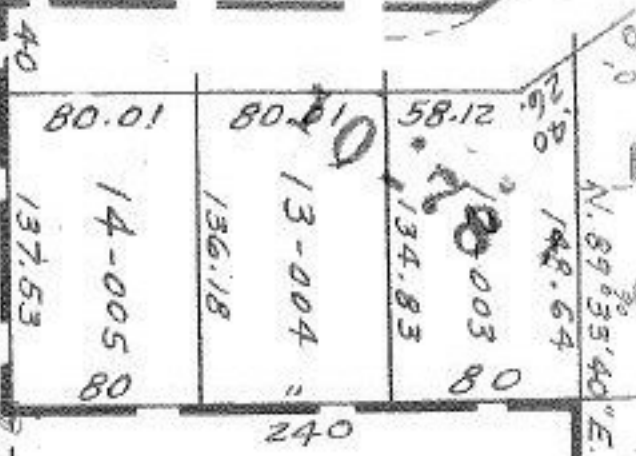


125 150
1127.03

90.02 90.01



SALE
900 - 00
V. 110
6 22
90
P. 89
8
7
9
5
4
3
90

#11206

APPROVED
LORAIN CO.
MAP DEPT.
DATE 11-10-77
PAGE 2-03-006-A
BY <i>Howard</i>
VOID AFTER

NOV 18 1977

MS 12-8-77
 1120.72
 1058.17
 023
 048
 4.38 A.
 4.01 A.
 1060.48

-006
4.79 A.

N. 89° 33' 40" E. 870

618.06

180

104