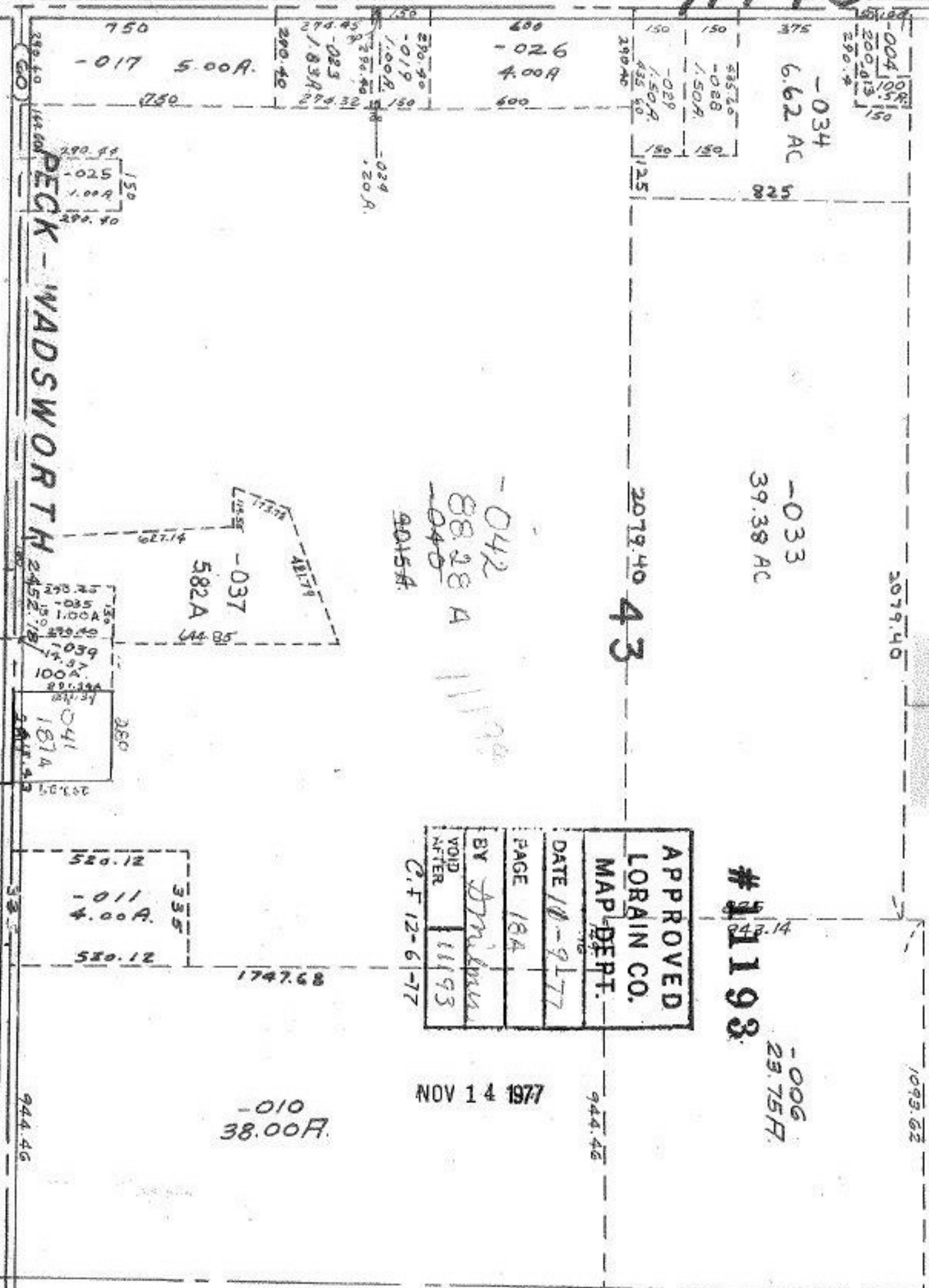


11193



PECK - WADSWORTH

-042  
88.28 A  
~~040~~  
90.15 A

APPROVED
LORAIN CO.
MAP DEPT.
DATE 10-9-77
PAGE 18A
BY <i>Smith</i>
VOID AFTER 11193
C.F. 12-6-77

NOV 14 1977

# 11193