

140.00  
8.33

13267

143.00  
131.67

#11190

APPROVED  
LORAIN CO.  
MAP DEPT.

DATE 11-10-77

PAGE 6-117

BY *Ed Milner*

WORD AFTER 11190



98

06-24-098-000-019  
4.66 R.

1553.64

99

583.22

389.88

524.07

TURNER

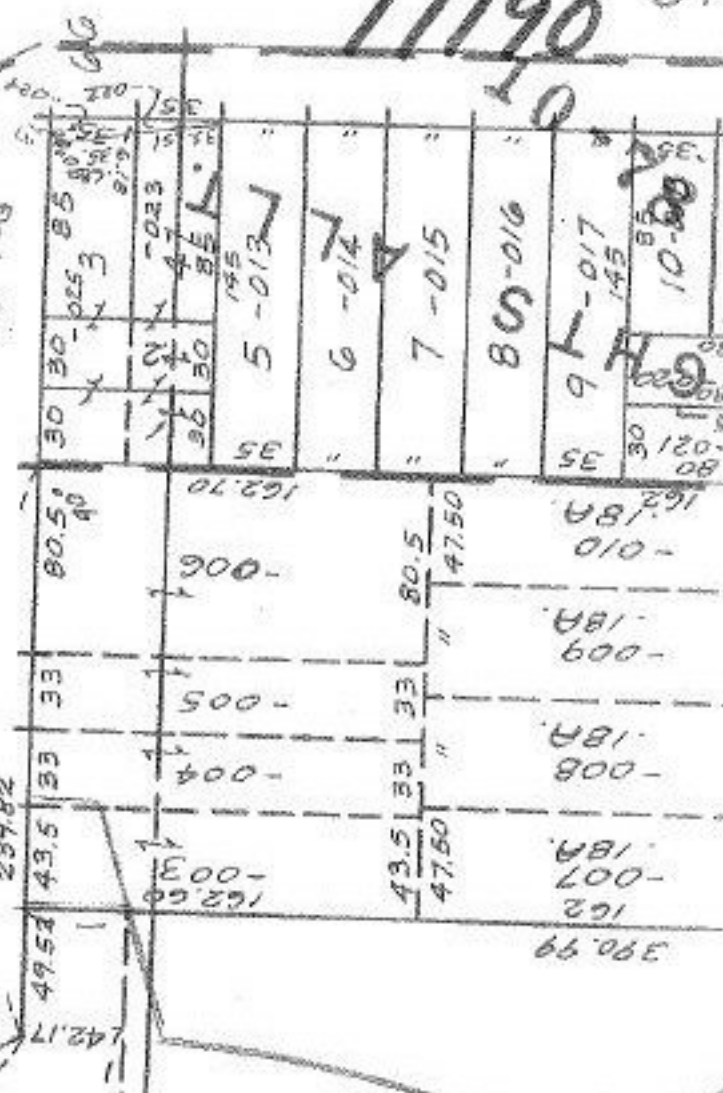
570

766.45

(1146.25)

100

06-24-100-000-026  
12.44 R.



11190

811