

- 003
42.00A.

1221.06
- 018
5.89A.
1221.06

- 025
26.87A.

1776.0
- 004
15.00F.

- 030
- 001
63.41A.
58.41A.

#11182

APPROVED
LORAIN CO.
MAP DEPT.

DATE 11-4-77

PAGE 12-H

BY *Robert*

VOID
AFTER

11-8-77

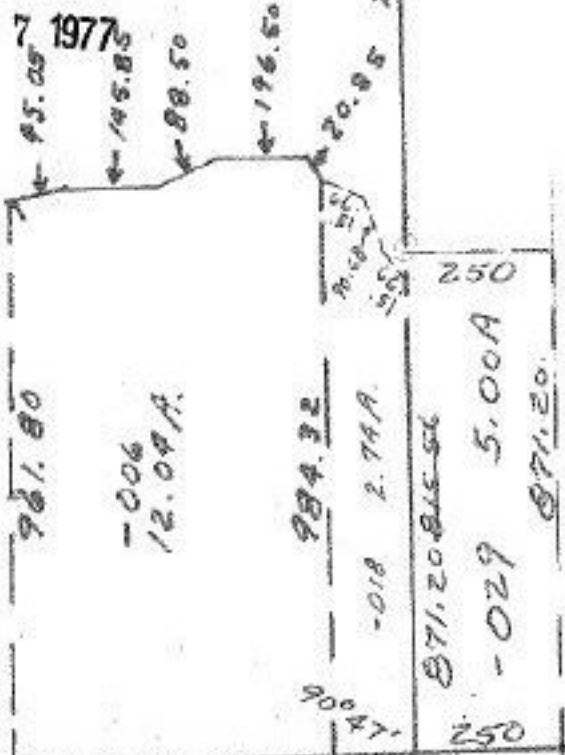
NOV

7 1977

3

9
13A.

2639.01

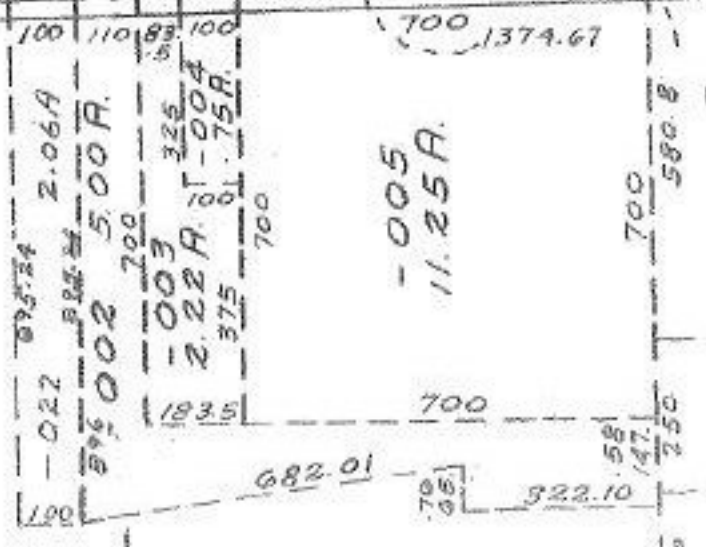
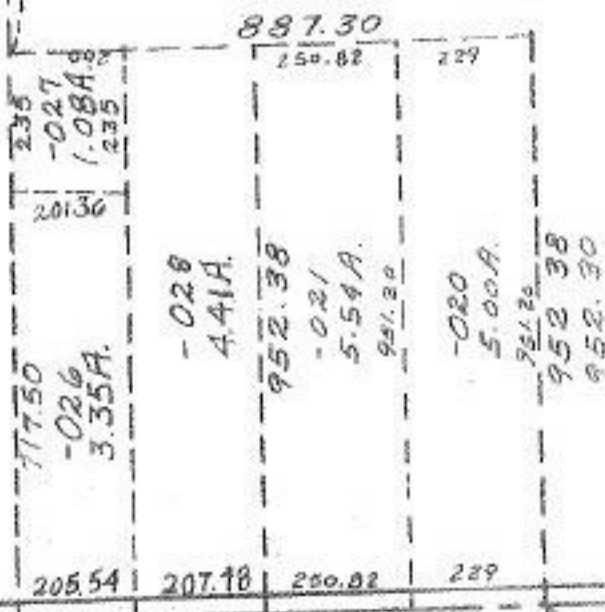


266.06

270

962.6

8



12-B