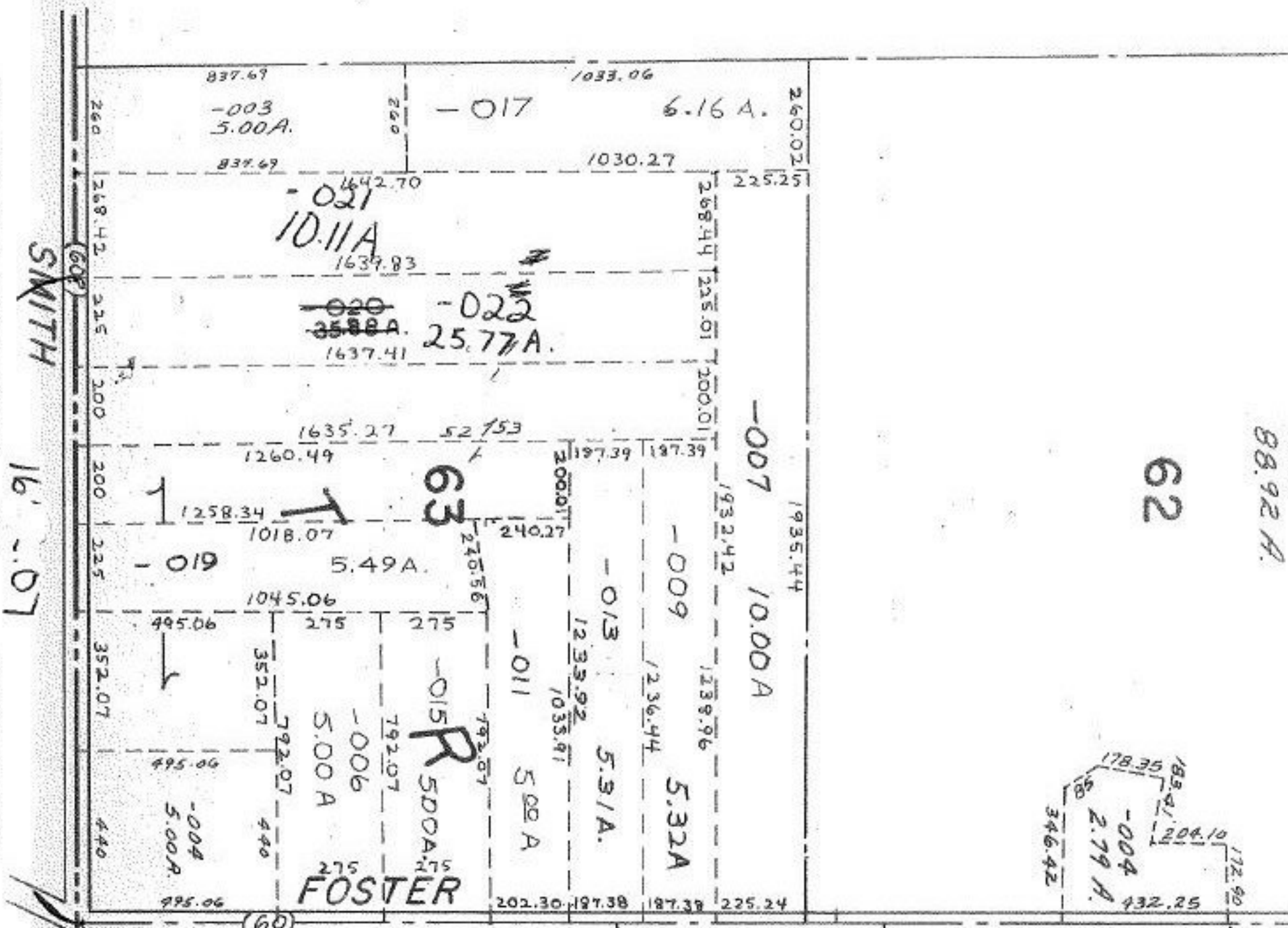


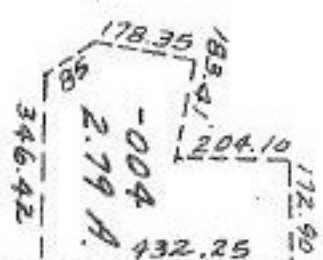
10-1-77
11172



SMITH
16' - .07

62

88.92 A.



APPROVED
LORAIN CO.
MAP DEPT.
DATE 11-1-77
PAGE 19-H
BY M Stough
VOID AFTER 11172

11172

2.79 A. 11-8-77

NOV 7 1977

35.88
10.11
25.77

-006
47.93

1296.90