

598

#11168

APPROVED
 LORAIN CO.
 MAP DEPT.

DATE 10-31-77
 PAGE 9-00-074-A
 BY M. Stoddart
 VOID AFTER 11/1/78

NOV 1 1977

89111
11-0-110-88

ST. 0 9

11-8-77

585

100

929.44

100

100

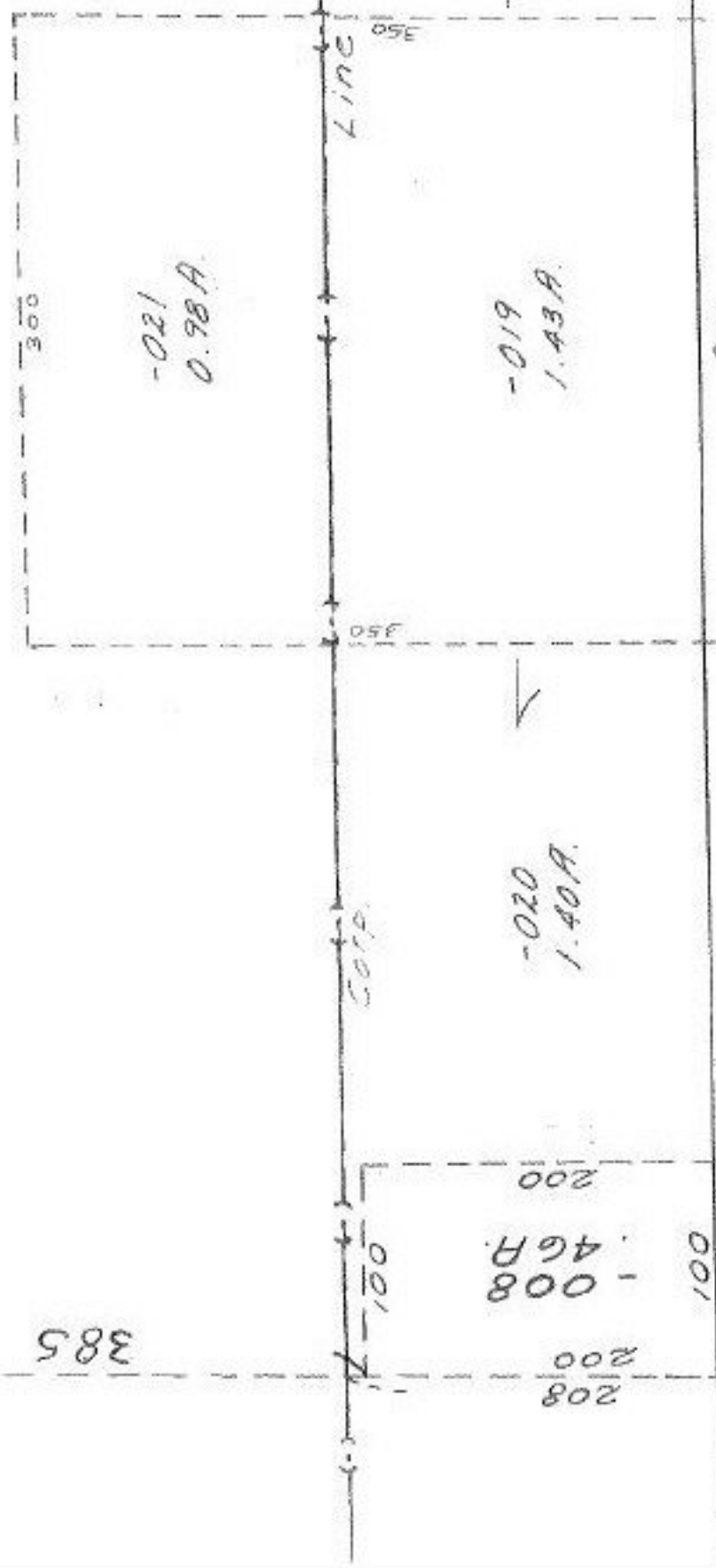
100

100

100

~~022~~
#8.3HA-02H
42.25A.

-023
6.09A



385

Corp.

Line

05F

05E

100

200

208

100

200

208

-020
1.40A.

-019
1.43A.

-021
0.98A.

-015
96A.

100