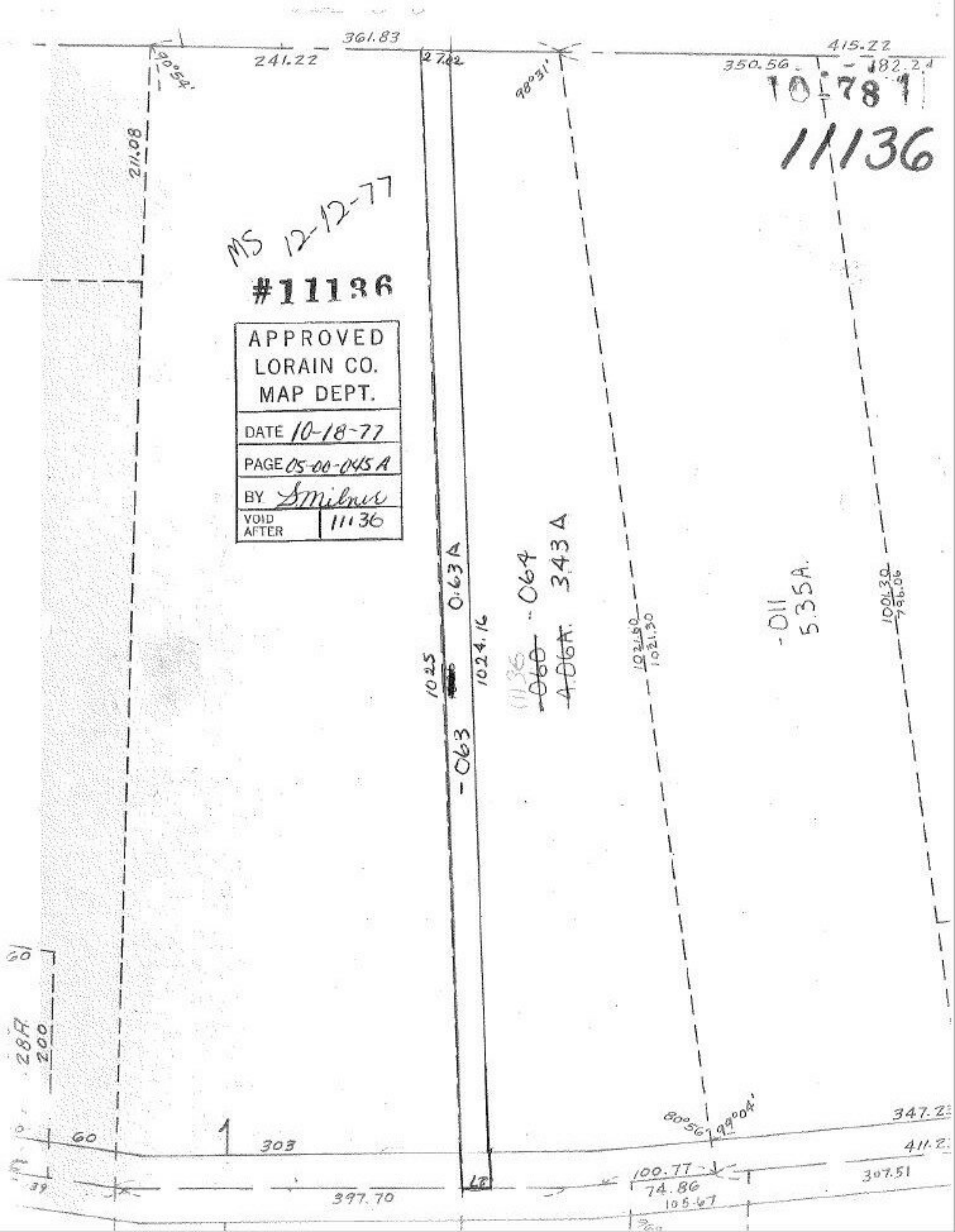


MS 12-12-77
#11136

APPROVED LORAIN CO. MAP DEPT.	
DATE 10-18-77	
PAGE 05-00-045 A	
BY <i>Smilner</i>	
VOID AFTER	11136

10-781
11136



241.22 361.83 27.02

350.56 415.22 182.24

211.08

78°31'

1025

0.63 A

1024.16

~~11136~~ - 064

~~4.06 A~~ 343 A

1024.50
1021.30

- 011
5.35 A.

1001.30
786.06

287
200

60

303

397.70

100.77
74.86
105.67

347.23

411.23

307.51

80°56' 99°00'