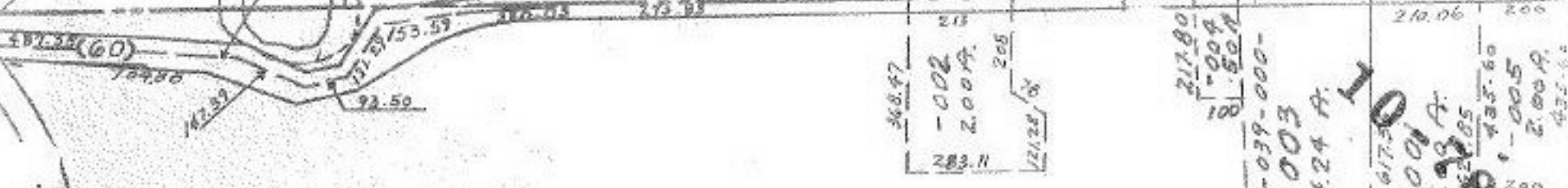


SHORT 1265.07

2536.03

1146.05



PT. 39

Pt. -005  
Pt. 108.26 A.

#11135

APPROVED  
LORAIN CO.  
MAP DEPT.

DATE 10-18-77

PAGE 77-D

BY Robert R. Puck

VOID AFTER #11135

C.F. 11-15-77

30.83  
5.20  
25.63  
30.83 1559.58

-008  
56.25 A.

227.80  
-007  
50 A.

217.80

217.80  
-006  
50 A.

PT. 38

217.80 -026 5.86°28'E. 1623.59 5.20A  
Pt. 19 05 037 000 010 1 Pt. 30.83A

-019 1614.74 5.17A.

-022 1596.14 5.14A

-023 1586.99 5.11A

-009 1577.84 5.08A

-005  
13.33A.

A

-010 30.83A. -012 25.63A.

R

-001  
10.00A.

PT. 37

N. 87°06'W. 1527.2  
77.17  
-005 2.63A.  
751.35

-006  
47.61A

669.90

656.7

