

SEE

10-78
11037

23

#11037

APPROVED
LORAIN CO.
MAP DEPT.

DATE 10-12-77

PAGE 4-K

BY *K. Kollert*

VOID
AFTER

MS
12-8-77

JAYCOX
347.21
22
519

SCHWARTZ

107

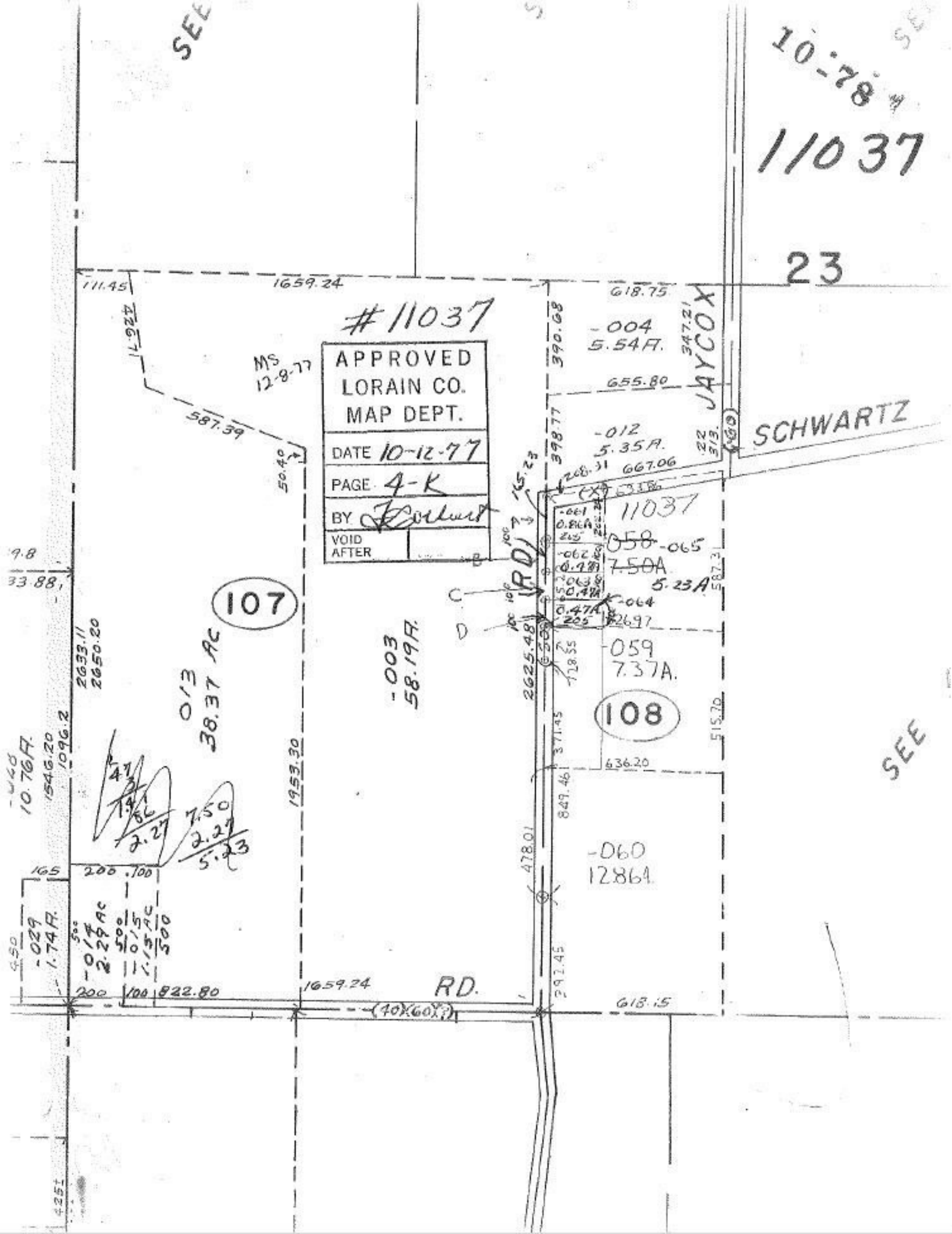
0.13 AC
38.37 AC

-003
58.19A

108

-060
1286A

SEE



111.45
1659.24
11.92A
587.59
50.40

9.8
33.88
2633.11
2650.20

10.76A
1546.20
1096.2

165
200
100
822.80
1659.24

4.50
0.029
1.74A
500
2.29 AC
500
0.15 AC
500
1.15 AC
500

4.7
1.9
1.86
2.27
7.50
2.27
5.23

1953.30

RD.
--(40x60x?)

618.75
-004
5.54A
655.80
-012
5.35A
667.06
390.68
398.77
208.31
-061
0.86A
205
-062
0.78A
205
50.47A
0.47A
205
226.97
-064
5.23A
587.31
-059
7.37A
636.20
515.70
478.01
849.46
371.95
2625.48
15.23
292.45
618.15

109

110

111

112

113

114

115

116

117

118

119

120

121

122

123