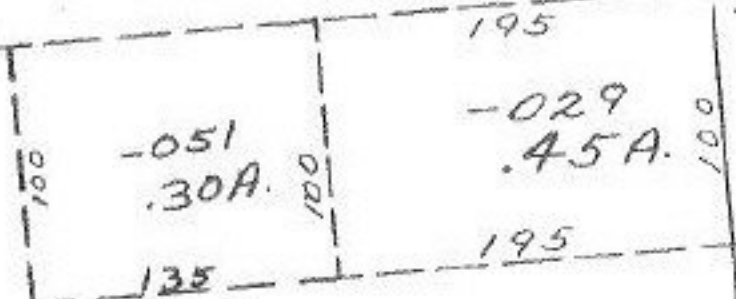


928.66

#11000

APPROVED LORAIN CO. MAP DEPT.	
DATE	9-30-77
PAGE	4-00-019-H
BY	J.L. Milner
VOID AFTER	11000



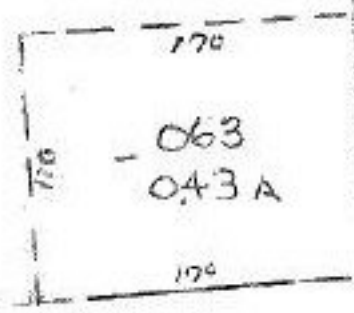
MS  
12-8-77

OCT 21 1977

~~-050~~  
~~1442A.~~

-064  
13.99A

611.46



929.50

SEE 4-00-019-L

10  
11  
12

NAGLE  
SEE 4-00-030-E  
LEAR

E 1/2 E 1/2 CENT 1/3 SE