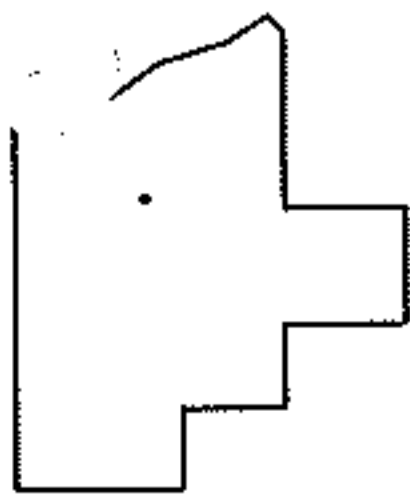
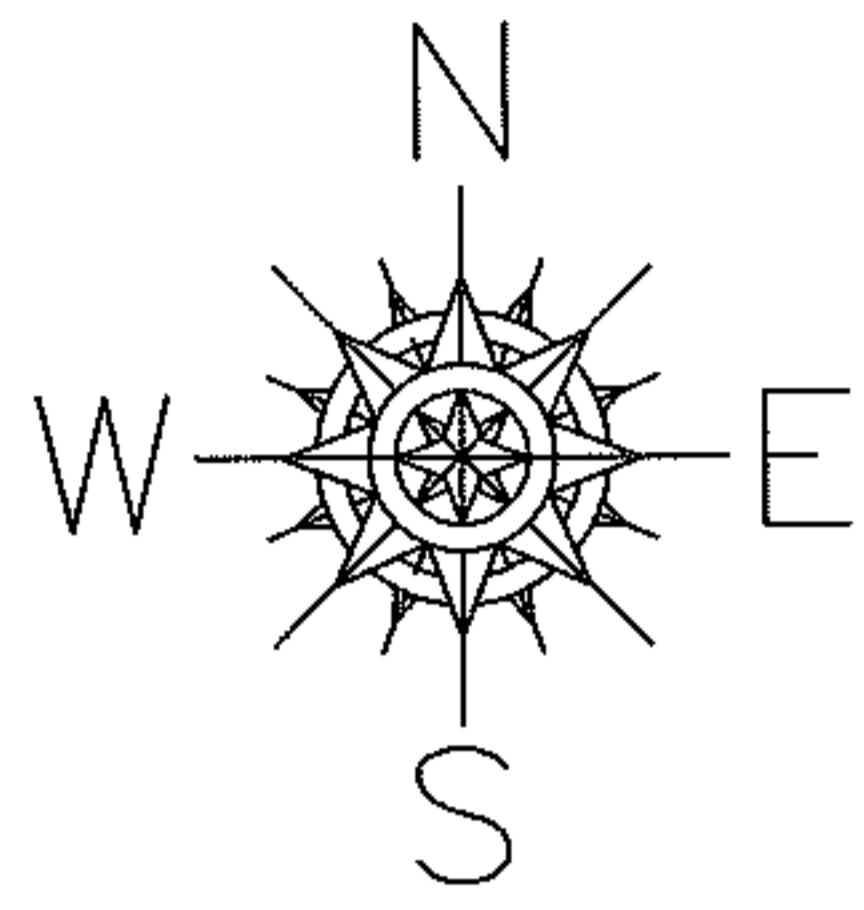
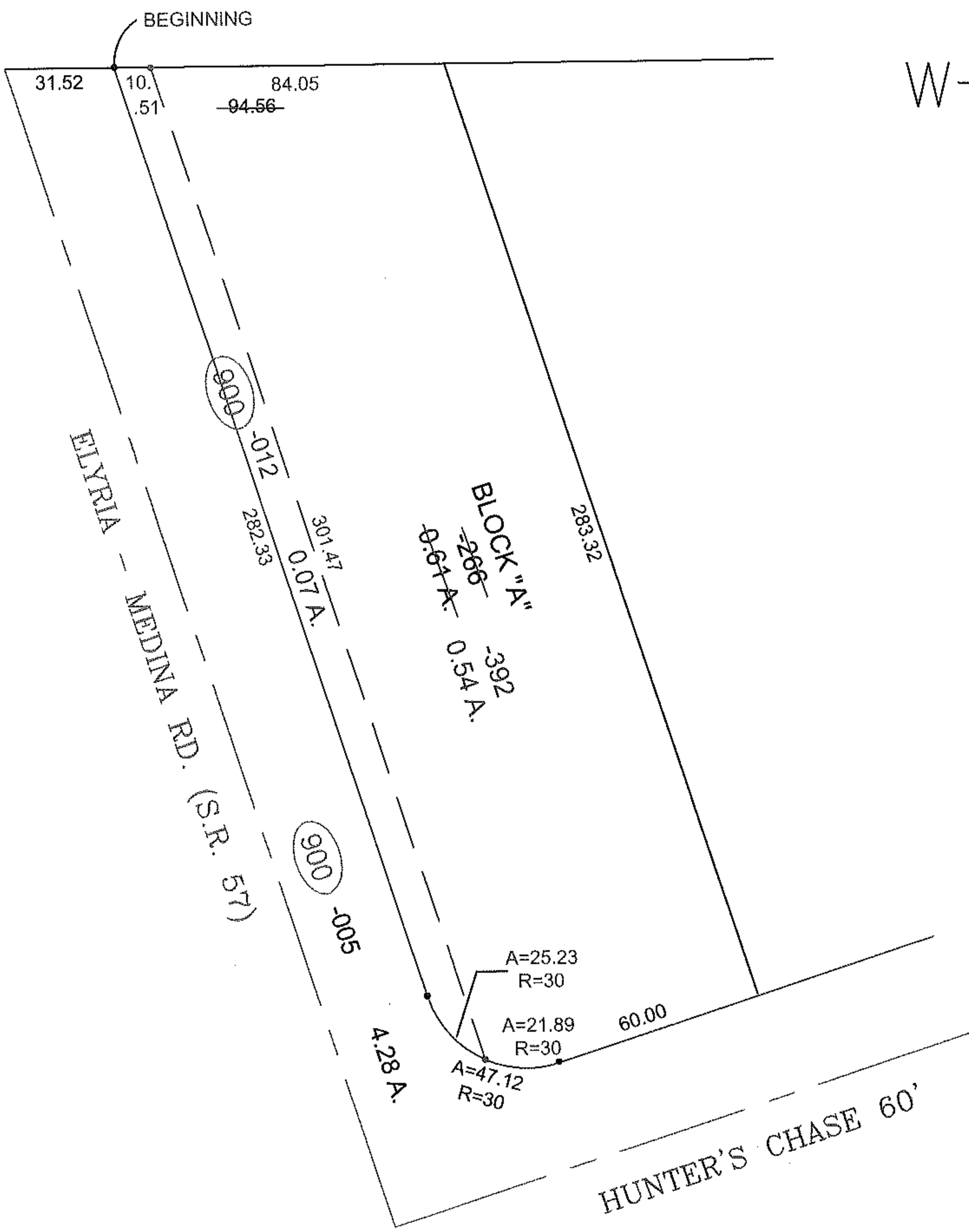


RASTER

PARENT PARCEL: 11-00-099-000-266
CHILD PARCEL: 11-00-099-900-012 & 11-00-099-000-392
STARTING POINT: N.W. CORNER OF BLOCK "A" IN EMERALD POINT SUB. NO. 1

11-00244



SPLITS/DEEDS PROCESSED
 LORAIN COUNTY TAX MAP DEPARTMENT
 226 MIDDLE AVE. ELYRIA, OHIO

SURVEYED BY: KENNETH C. DEAN JR.
 CLOSURE: 0.01 : 10,000
 MAP PAGE(S): 11-00-099-B
 APPROVED BY: TJS DATE: 12/29/11
 SCALE: 1" = 50' PRIOR INST.: 20070227934