

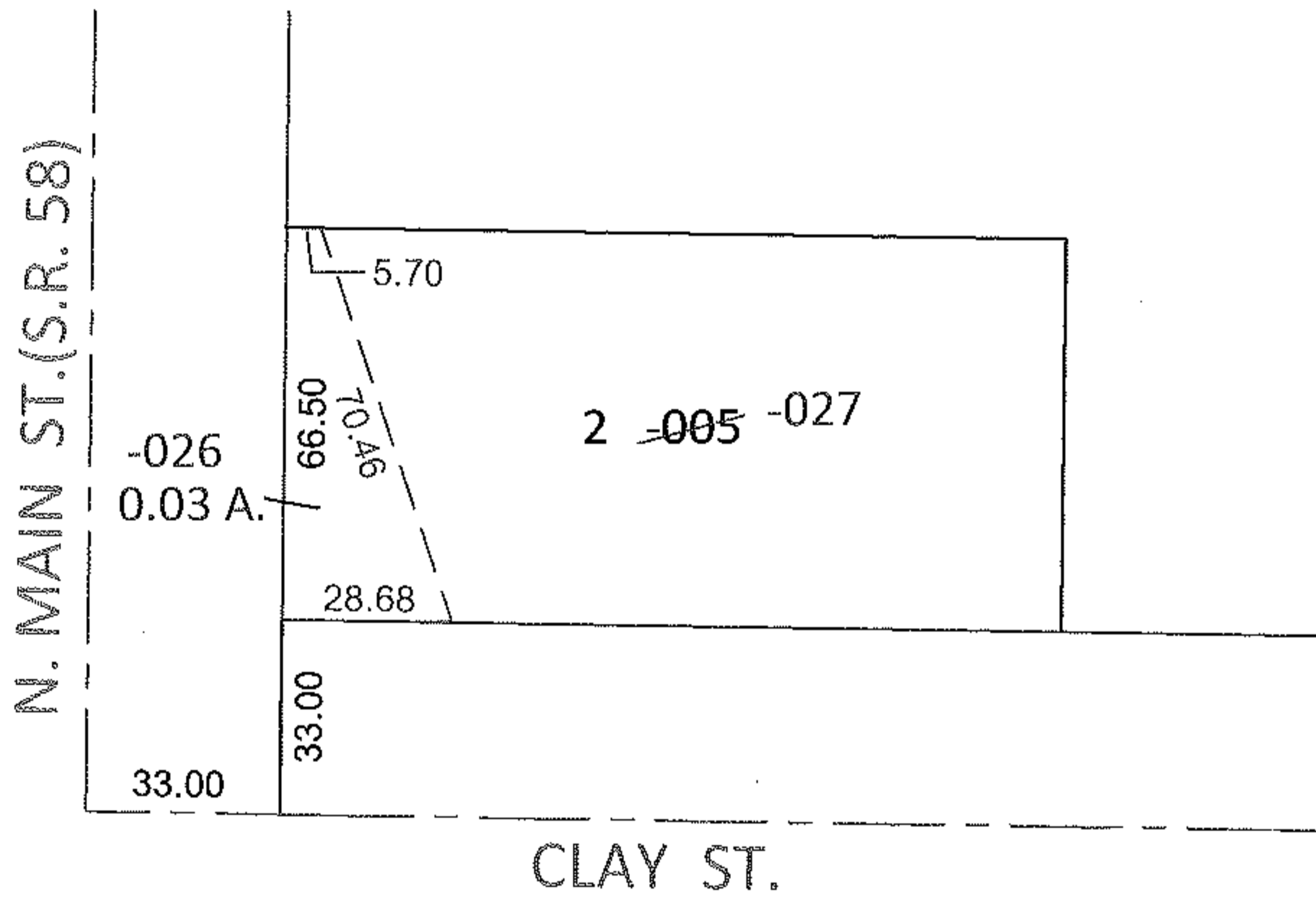
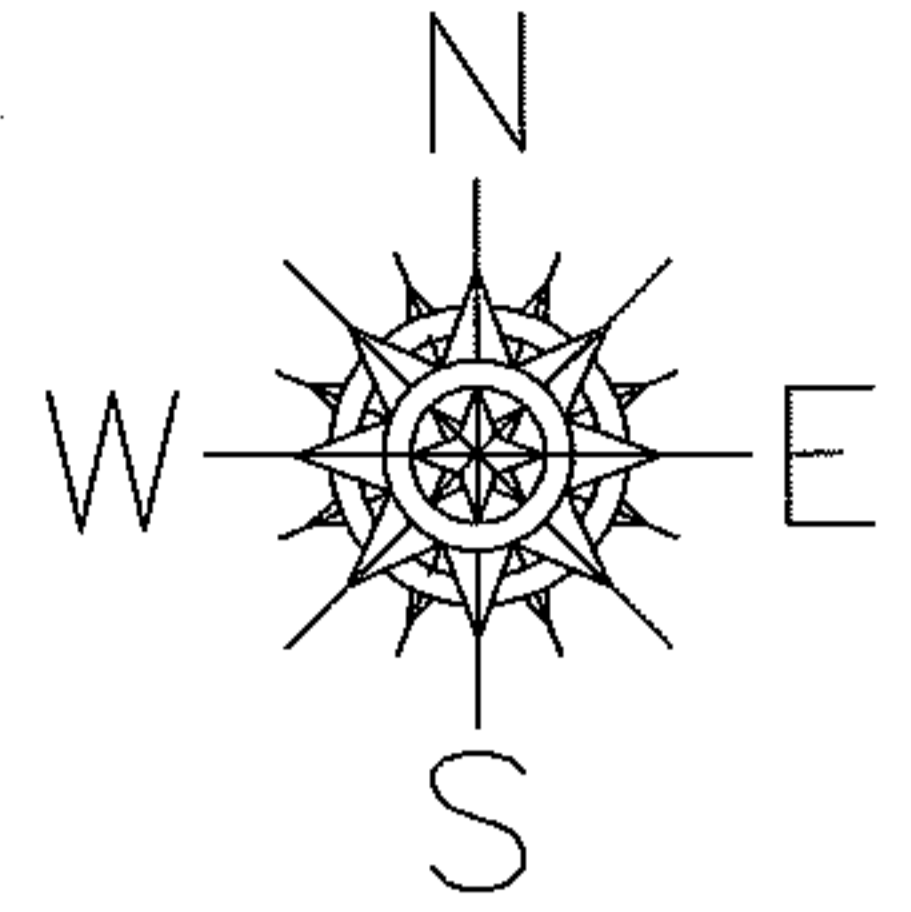
Russell

PARENT PARCEL: 18-00-021-104-005

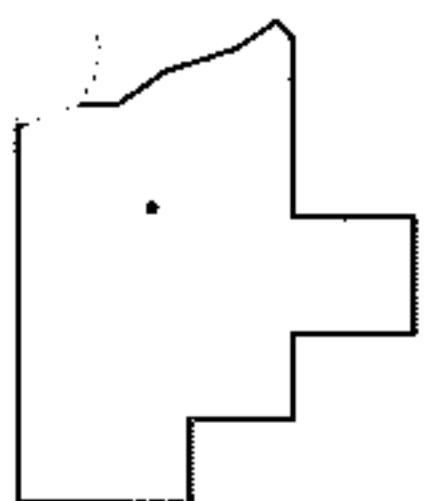
CHILD PARCEL: 18-00-021-104-026, -027

STARTING POINT: INTERSECTION OF C/L OF S.R.58 AND C/L OF CLAY ST.

11-00240



18-00-021-104-027  
70.46 X 103.32



**SPLITS/DEEDS PROCESSED**

LORAIN COUNTY TAX MAP DEPARTMENT  
226 MIDDLE AVE. ELYRIA, OHIO

SURVEYED BY:	JON D. BRUNER
CLOSURE:	.01:10,000
MAP PAGE(S):	18-00-021-C
APPROVED BY:	RRM DATE: 9-23-11
SCALE:	1"= 50' PRIOR INST.: OR 333/778