

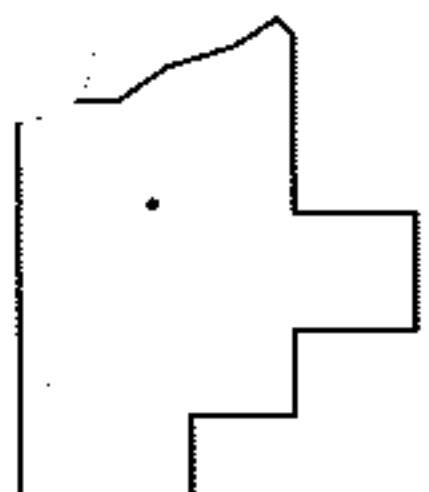
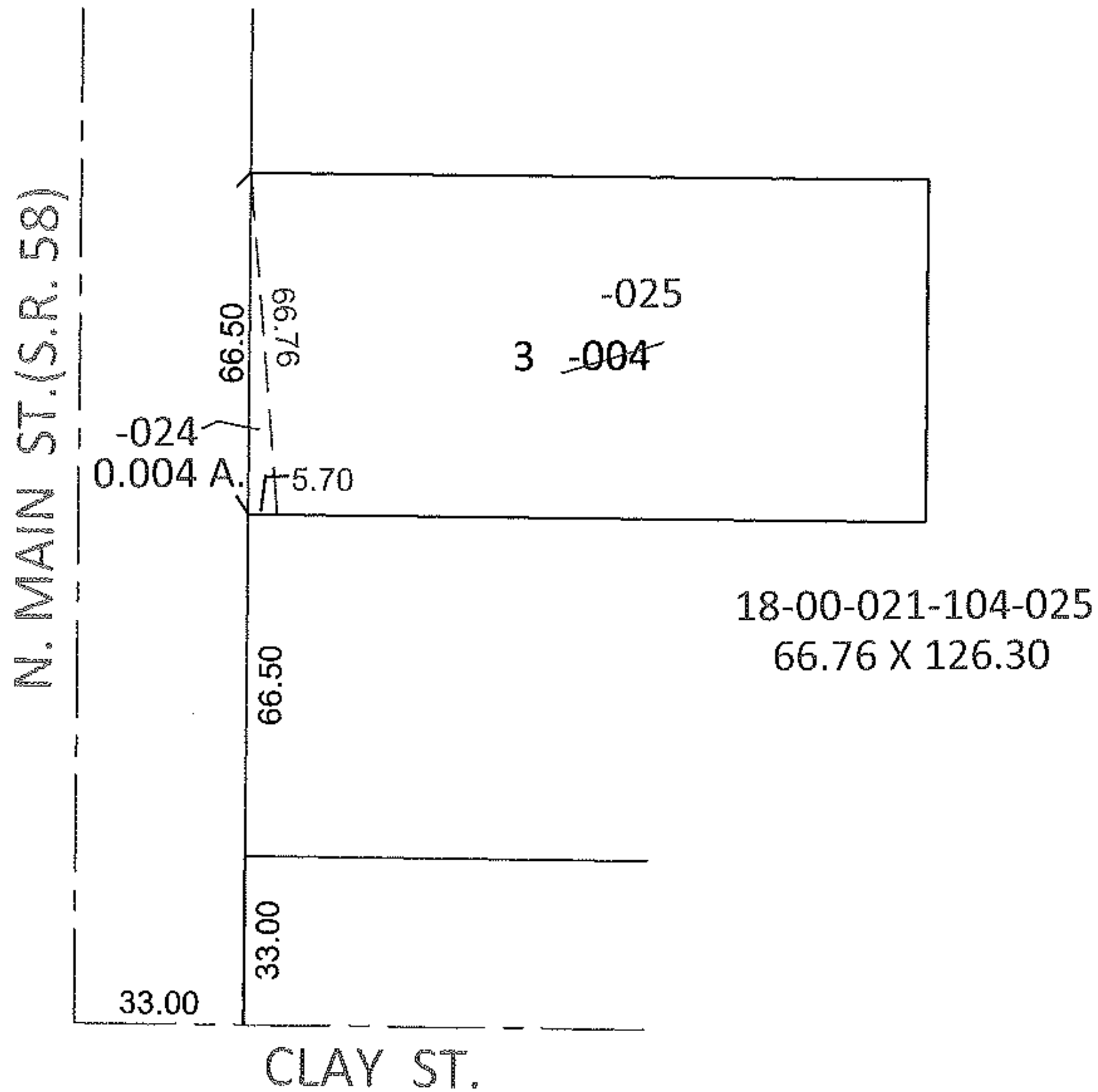
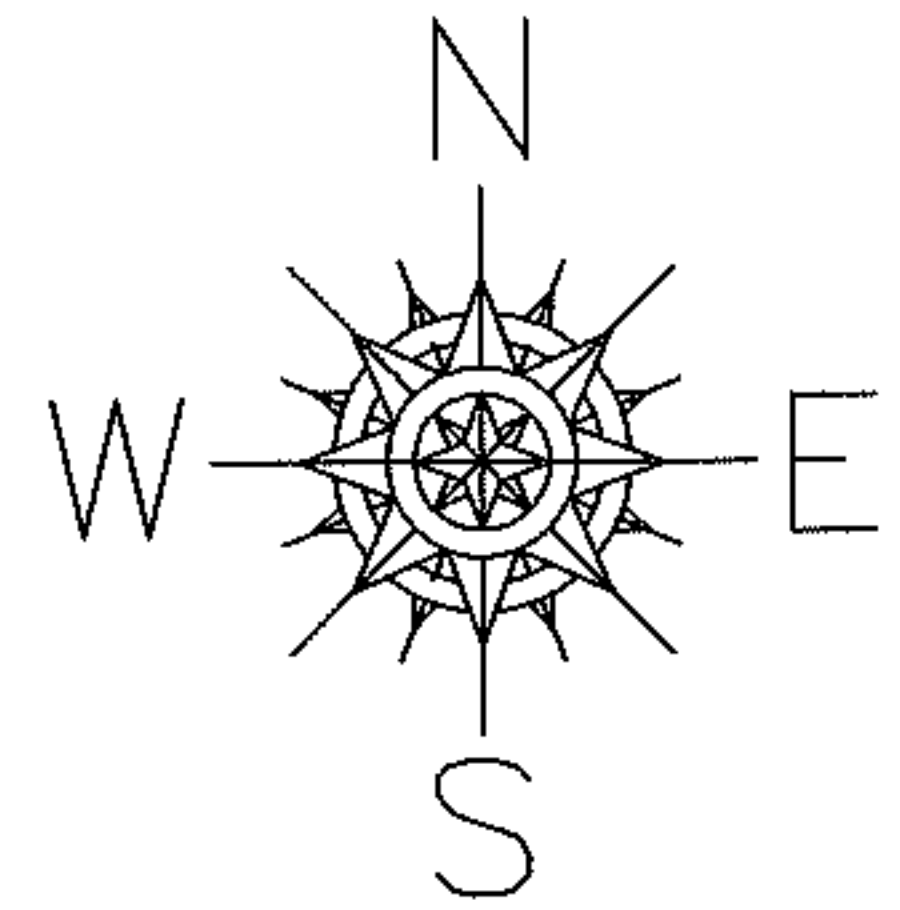
RASBER

PARENT PARCEL: 18-00-021-104-004

CHILD PARCEL: 18-00-021-104-024, -025

STARTING POINT: INTERSECTION OF C/L OF S.R. 58 AND C/L OF CLAY ST.

11-00239



SPLITS/DEEDS PROCESSED

LORAIN COUNTY TAX MAP DEPARTMENT
226 MIDDLE AVE. ELYRIA, OHIO

SURVEYED BY: JON D. BRUNER

CLOSURE: .01:10,000

MAP PAGE(S): 18-00-021-C

APPROVED BY: RRM DATE: 9-23-11

SCALE: 1" = 50' PRIOR INST.: OR 333/778