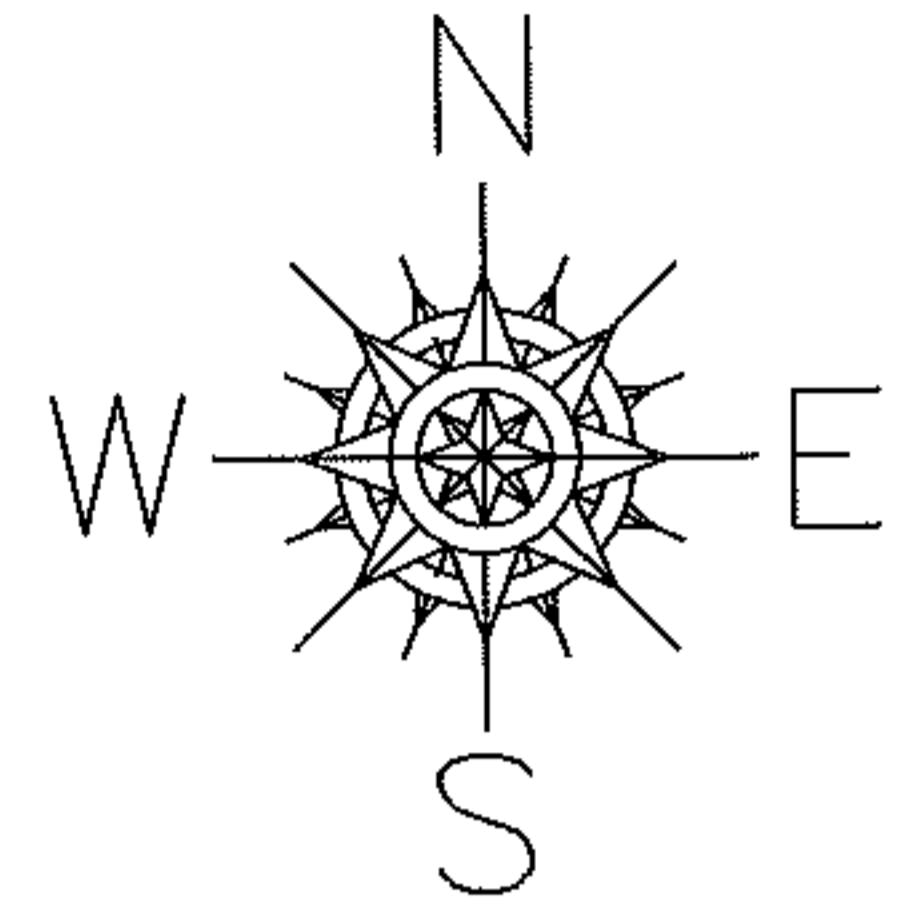


PARENT PARCEL: 18-00-021-105-008

CHILD PARCEL: 18-00-021-105-024, -025

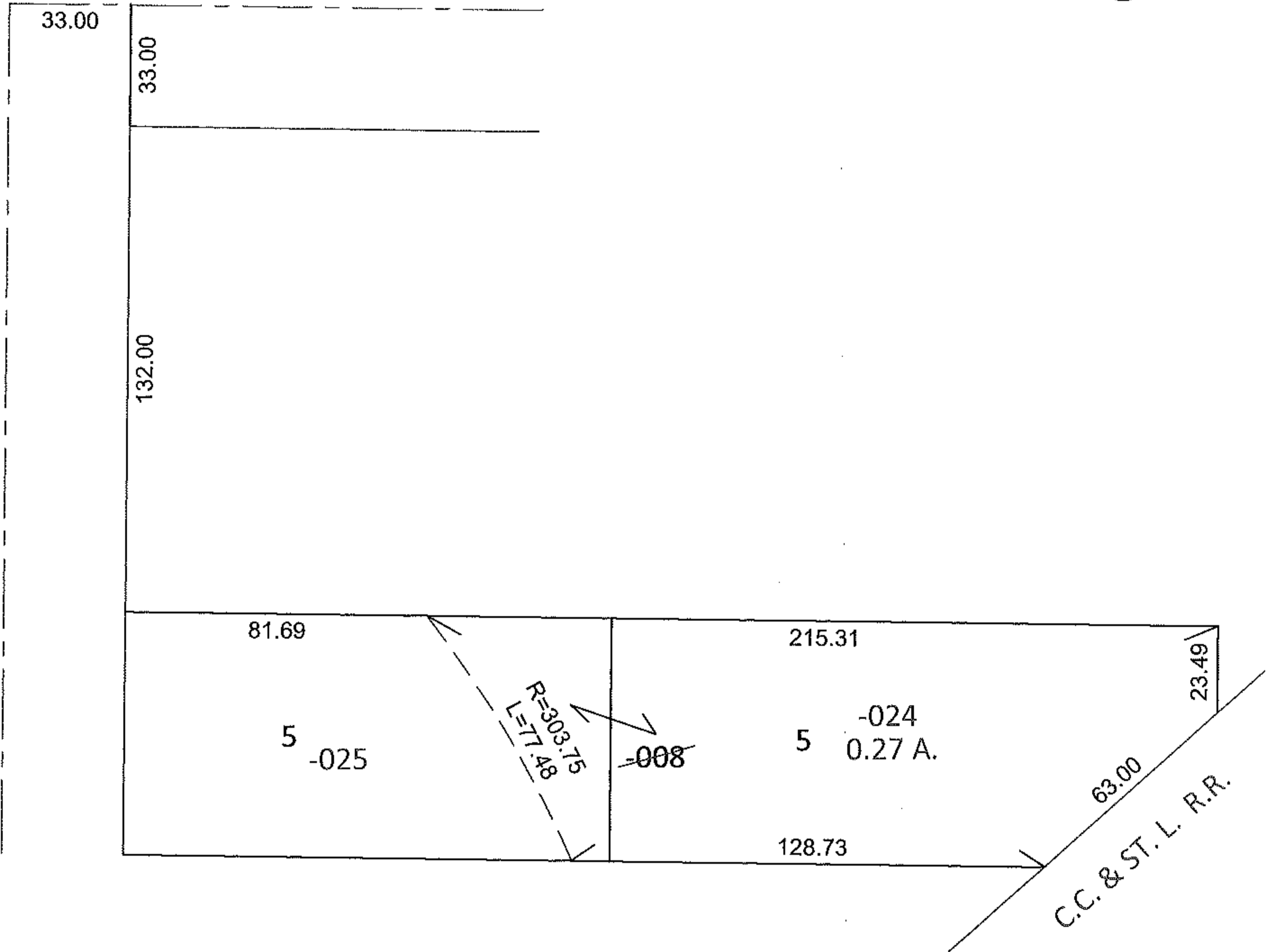
11-00238

STARTING POINT: INTERSECTION OF C/L OF CLAY ST. AND C/L OF S.R.58

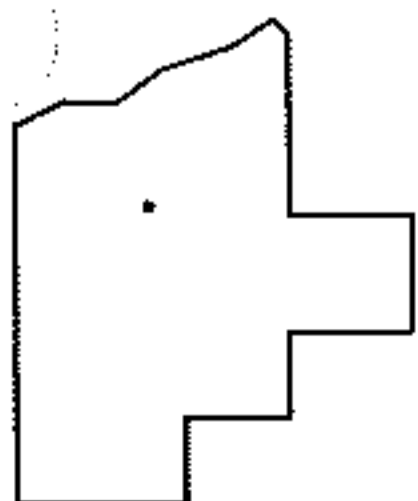


CLAY ST.

N. MAIN ST. (S.R. 58)



18-00-021-105-025
66 X 125.27 IRR



SPLITS/DEEDS PROCESSED

LORAIN COUNTY TAX MAP DEPARTMENT
226 MIDDLE AVE. ELYRIA, OHIO

SURVEYED BY: JON D. BRUNER

CLOSURE: .01:10,000

MAP PAGE(S): 18-00-021-C

APPROVED BY: RRM DATE: 9-23-11

SCALE: 1"= 50' PRIOR INST.: 19980574617