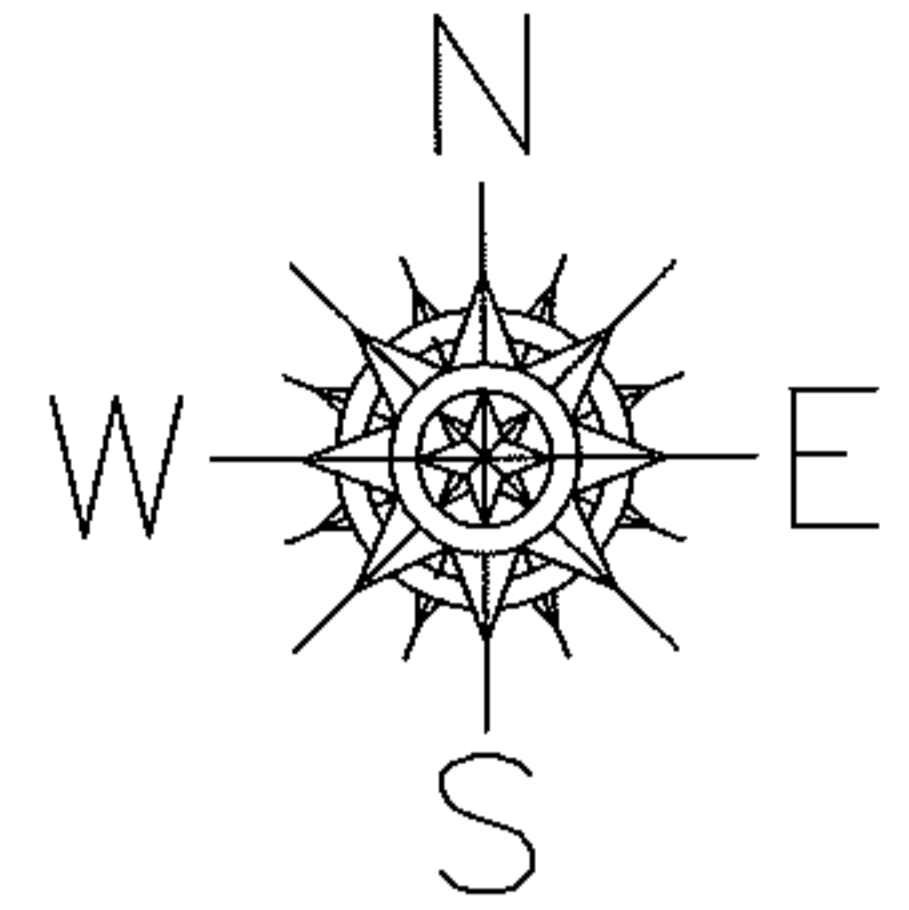


PARENT PARCEL: 18-00-021-105-010

CHILD PARCEL: 18-00-021-105-022, -023

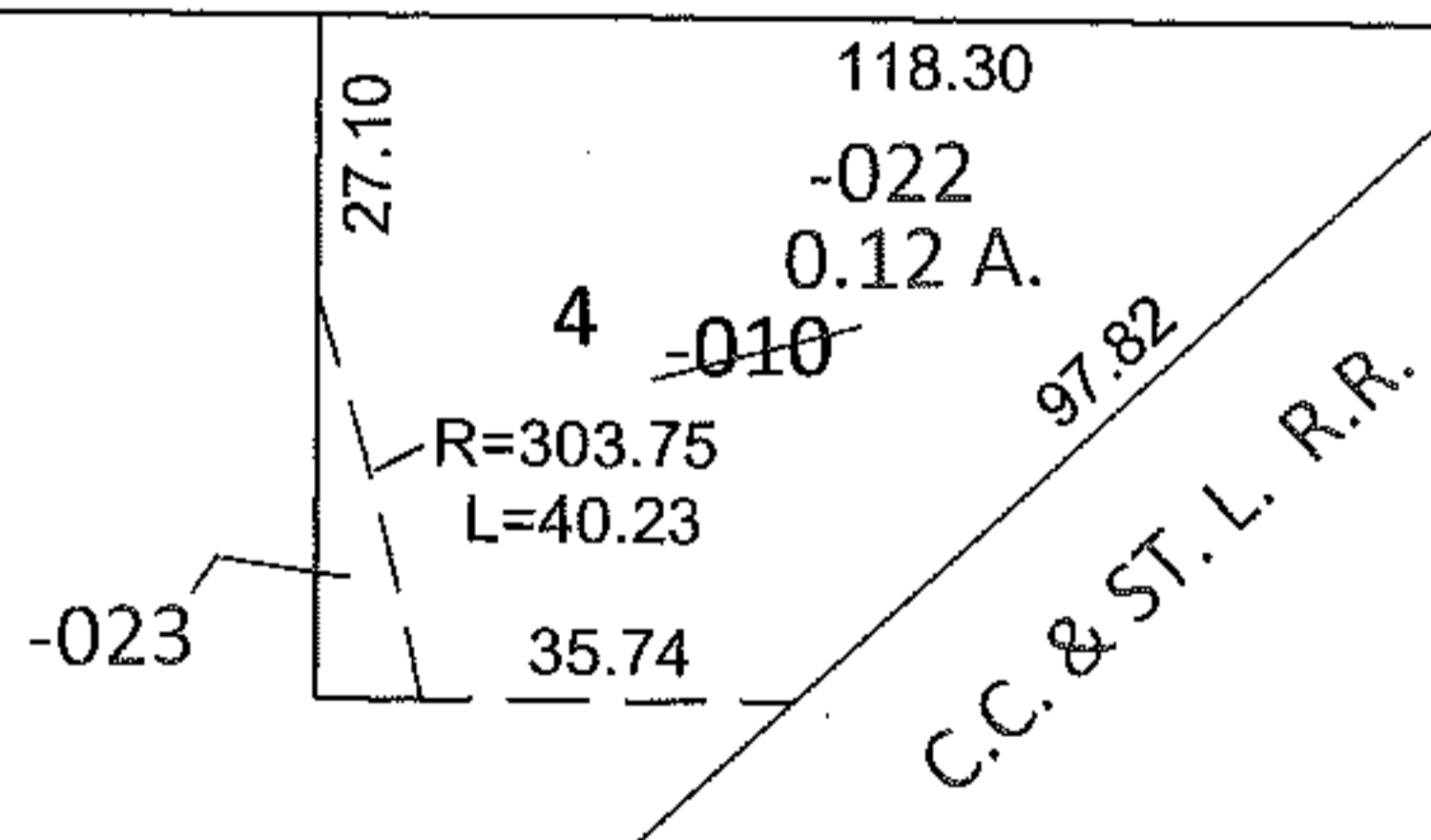
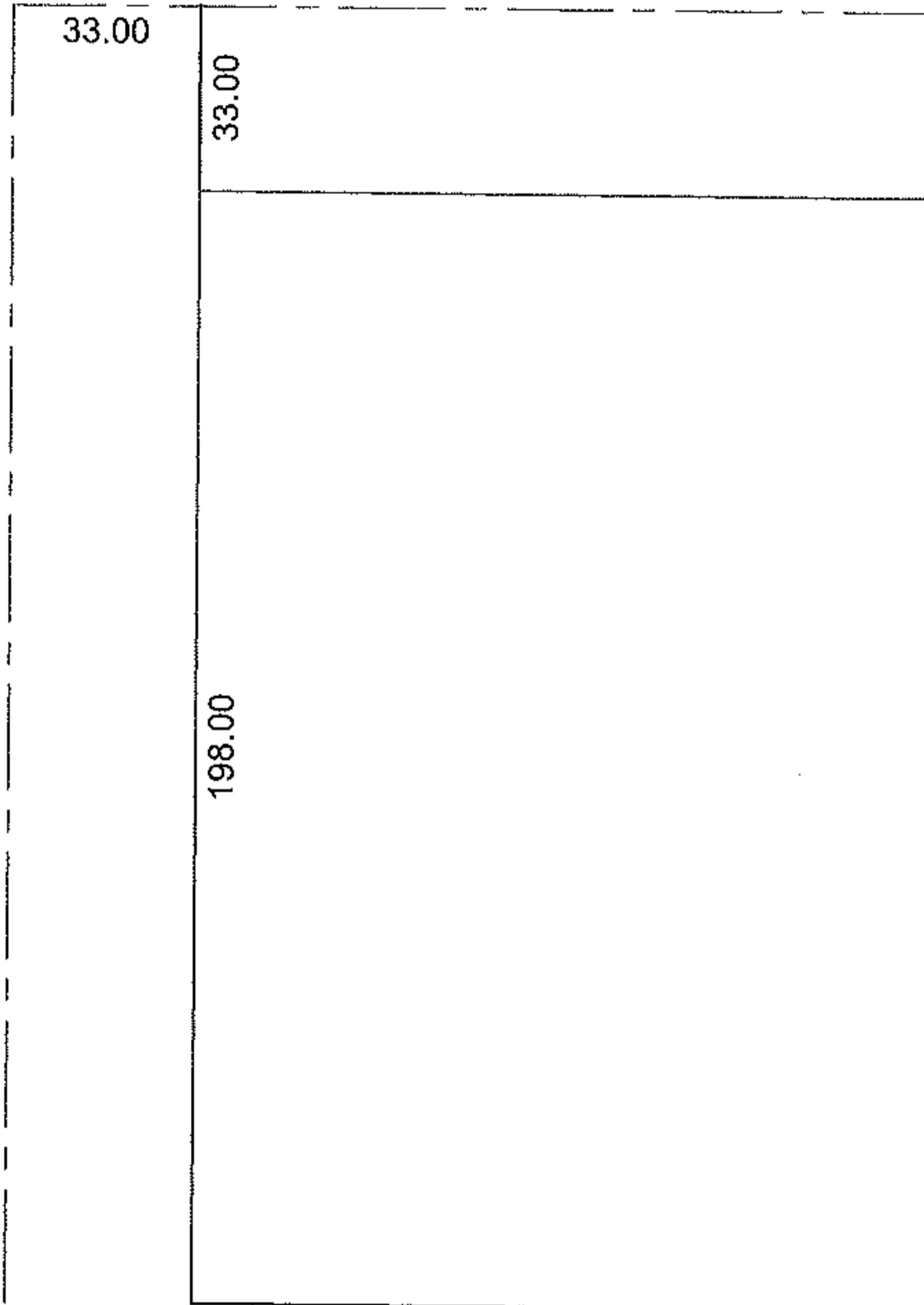
11-00237

STARTING POINT: INTERSECTION OF C/L OF CLAY ST. AND C/L OF S.R. 58



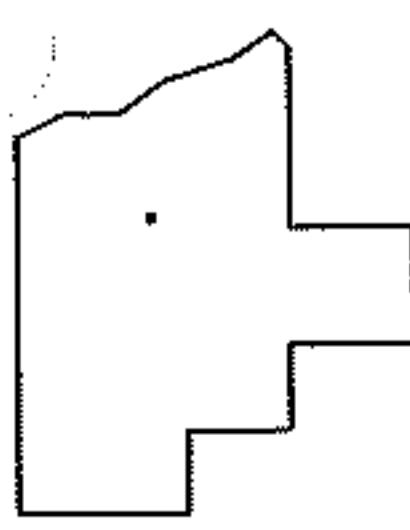
N. MAIN ST. (S.R. 58)

CLAY ST.



18-00-021-105-023  
10.05 X 40.23 X 38.90 TRIANGLE

C.C. & ST. L. R.R.



**SPLITS/DEEDS PROCESSED**

LORAIN COUNTY TAX MAP DEPARTMENT  
226 MIDDLE AVE. ELYRIA, OHIO

SURVEYED BY: JON D. BRUNER

CLOSURE: .01:10,000

MAP PAGE(S): 18-00-021-C

APPROVED BY: RRM DATE: 9-23-11

SCALE: 1" = 50' PRIOR INST.: 19980574616