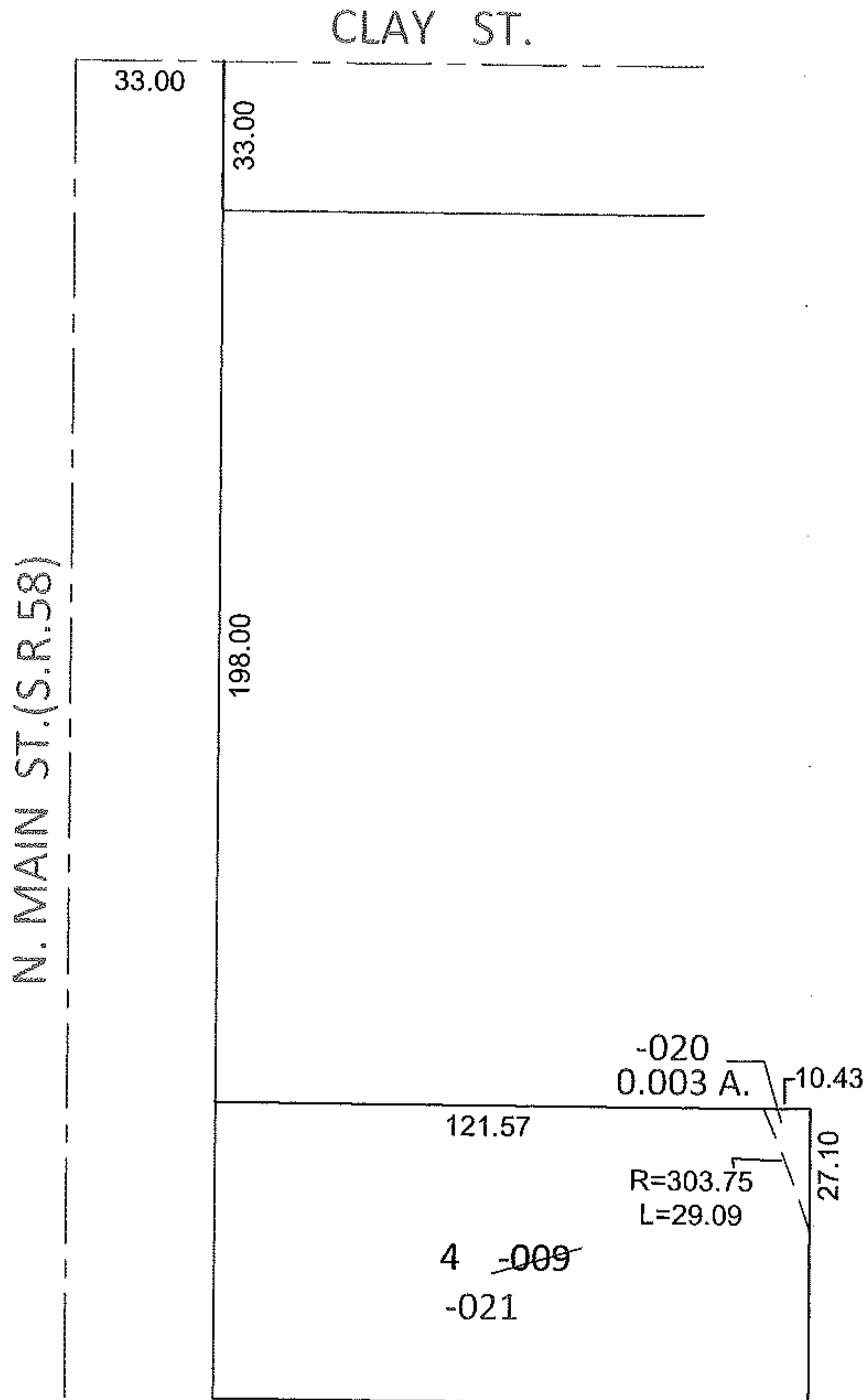
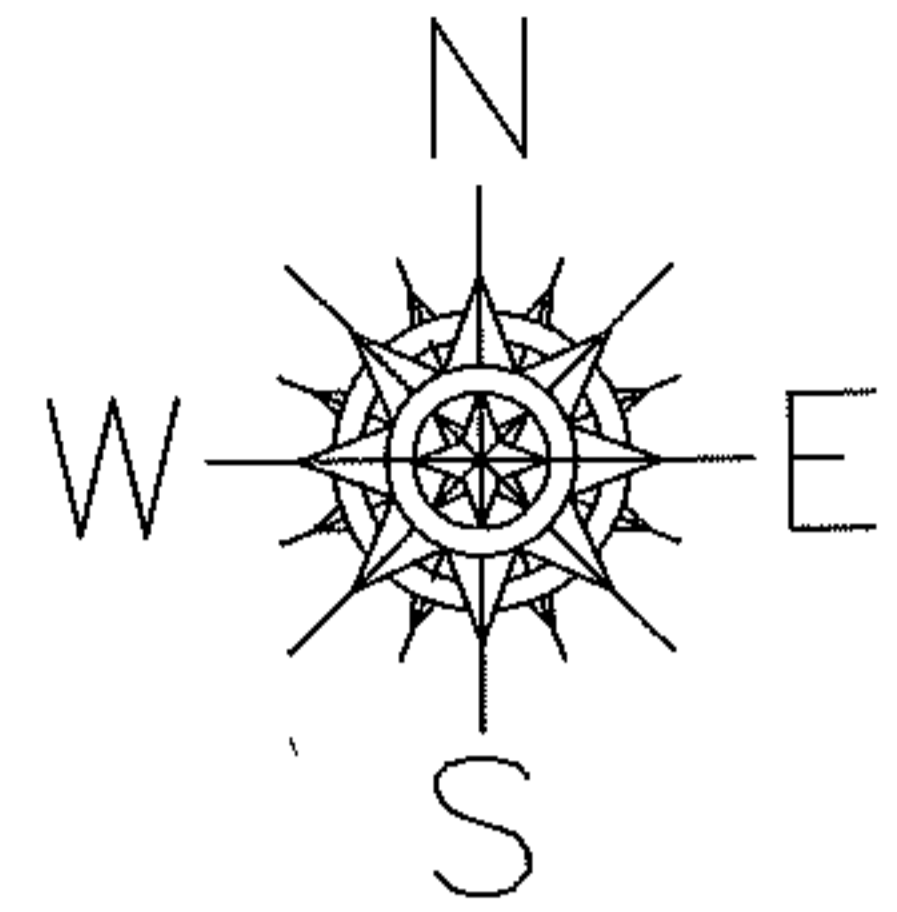


PARENT PARCEL: 18-00-021-105-009

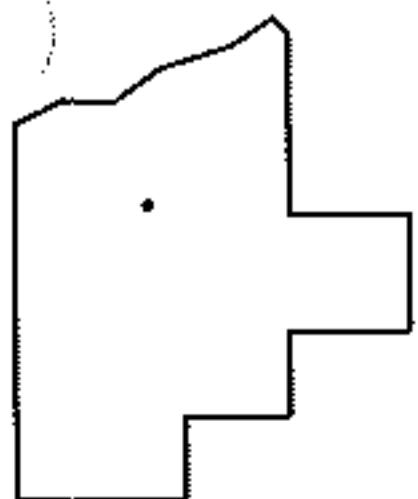
CHILD PARCEL: 18-00-021-105-020, -021

11-00236

STARTING POINT: INTERSECTION OF C/L OF CLAY ST. AND C/L OF S.R. 58



18-00-021-105-021  
66 X 121.57 IRR



**SPLITS/DEEDS PROCESSED**

LORAIN COUNTY TAX MAP DEPARTMENT  
226 MIDDLE AVE. ELYRIA, OHIO

SURVEYED BY: JON D. BRUNER

CLOSURE: .01:10,000

MAP PAGE(S): 18-00-021-C

APPROVED BY: RRM DATE: 9-23-11

SCALE: 1"= 50' PRIOR INST.: 19980574616